

Artecy

CROSS STITCH

The Dedication

Adapted from Artwork by Edmund Blair Leighton



Cross Stitch Design by Tereena Clarke.

Completed Size = 236w x 300h Stitches

14 Count, 17w x 21.5h inches (43cm x 55cm)

16 Count, 15w x 19h inches (38cm x 48cm)

18 Count, 13.5w x 17h inches (34cm x 43cm)

Uses 69 DMC cotton colours. Only full cross stitches are used in this pattern.

Pattern Instructions

* This pattern can be worked on any fabric type, colour or count you prefer. To work out the size of the finished article, take the number of stitches wide and high and divide it by the count of your fabric (e.g. 14,16,18 count aida etc) to get the size in inches. Times it by 2.54 to get centimetres. We have the sizes in inches shown on the previous page. Also leave at least a few inches of fabric around each side of the design to assist in framing. The higher the fabric count the smaller the completed project will be.

* To put the pattern together look in the top and bottom corners. The page numbers in brackets show which page number it joins up to. Page 1 always starts at the top left hand side of the pattern. Our pages also have a shaded grey section. This indicates a 3 row overlap from adjoining pages to assist with reading the pattern. PLEASE DO NOT RESTITCH THIS AREA.

* You should begin at the centre of the pattern. To find the centre of the pattern it is just a matter of laying the pattern out and locating the arrows at the top and left hand side of the patterns, they are determined by dividing the stitch numbers wide and high in half. Where the two points meet in the middle, that is the centre.

* If you need more assistance to find the middle of your pattern or the page layout, please see the notes section on the colour symbol chart. The easiest way to stitch this pattern, as it has multiple pages, is to stitch one page at a time.

* We suggest using two strands of floss for each stitch and one strand for backstitching if the pattern calls for it.

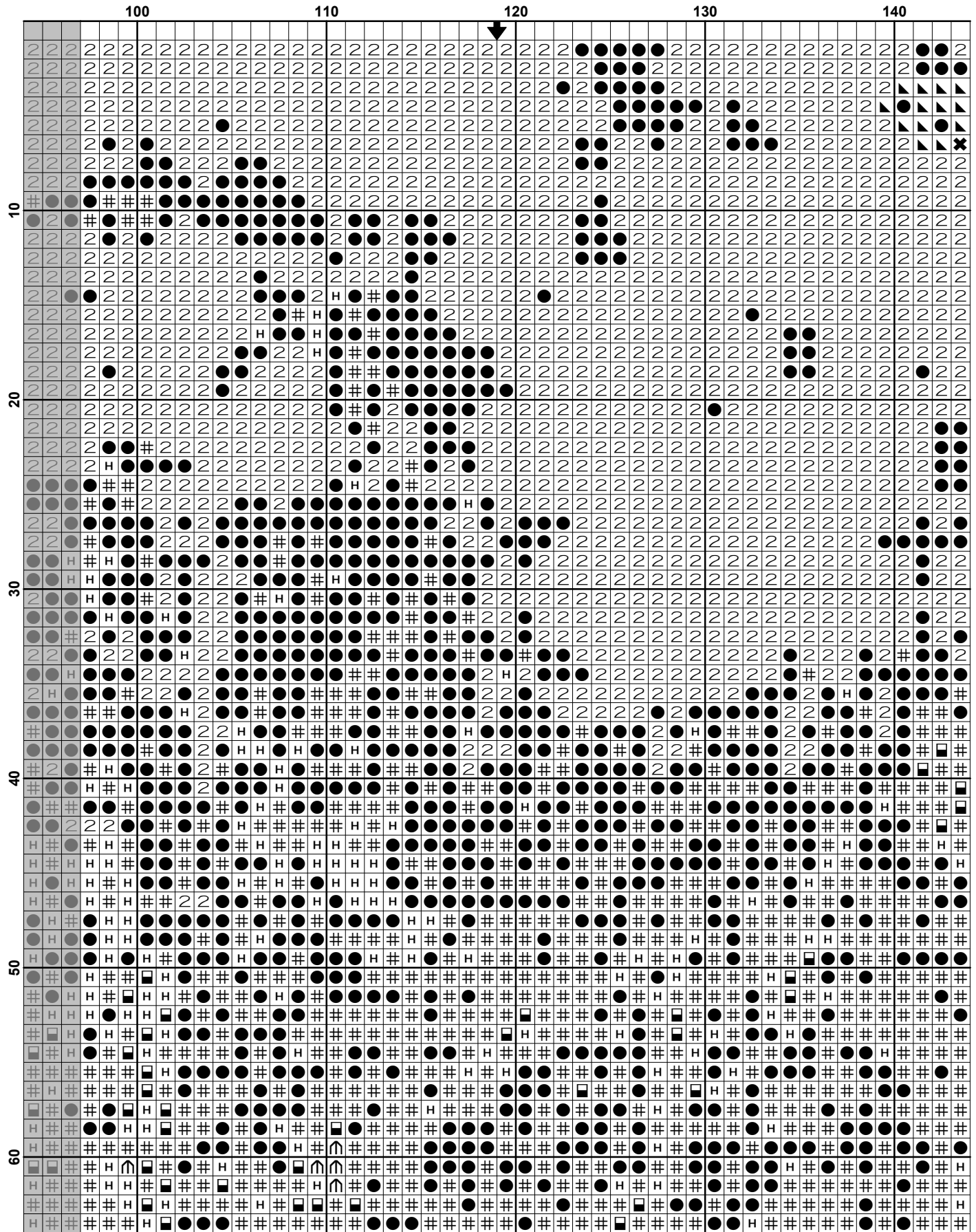
We hope you enjoy stitching our pattern.

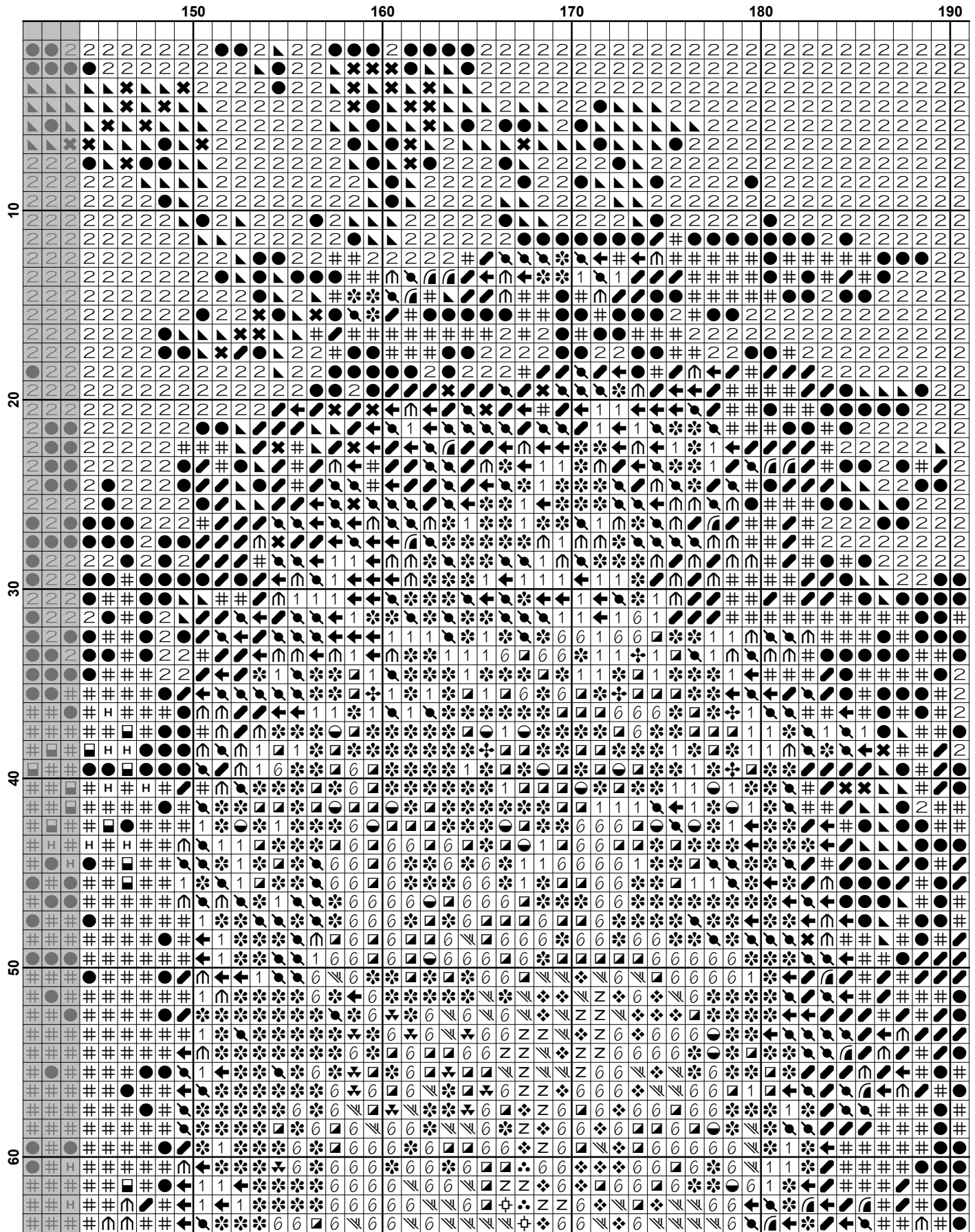
Thanks and Best Wishes
Tereena Clarke

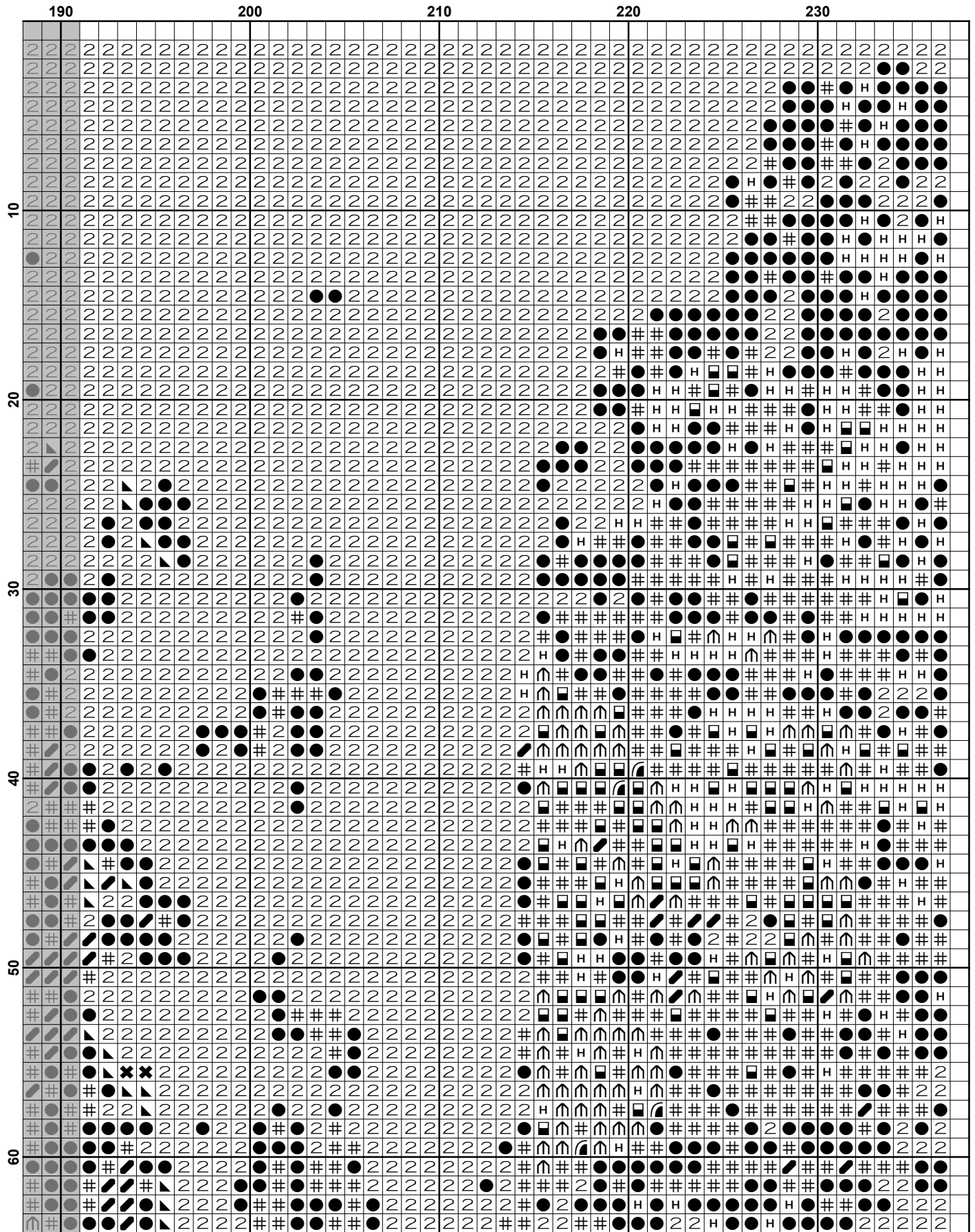
Artecy Cross Stitch
Po Box 3474
Tuggerah, NSW 2259
Australia

Websites: www.artecy.com and www.artecyshop.com
Email: artecy@artecy.com or stitch@artecyshop.com

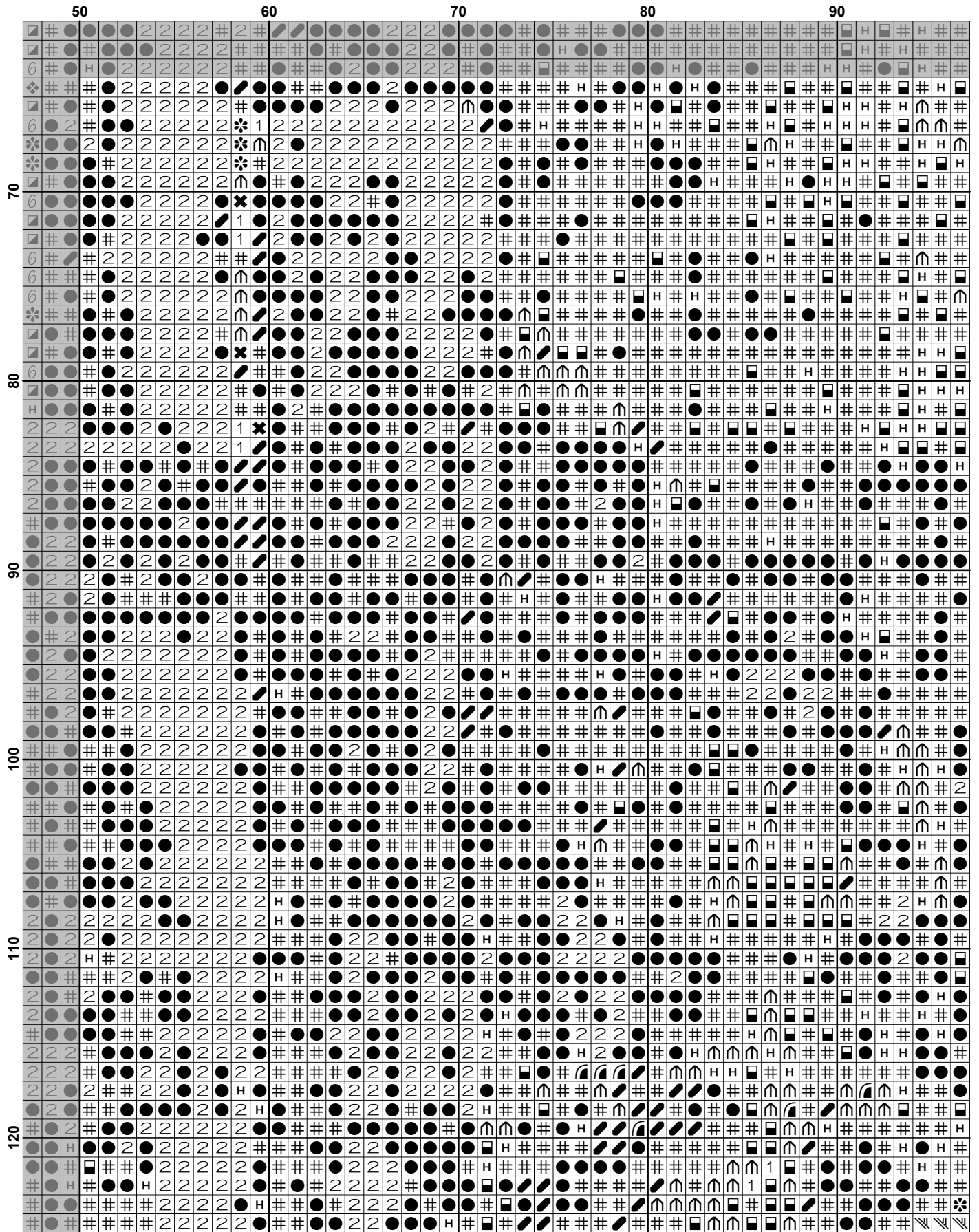
*Patterns are strictly for personal use only. It is against our copyright to make kits for sale from our designs or to sell, copy or redistribute this pattern in any form. You may not upload our patterns to any internet forums or groups or any other website. You may make 1 copy of this pattern for a working copy for your own personal use if needed.

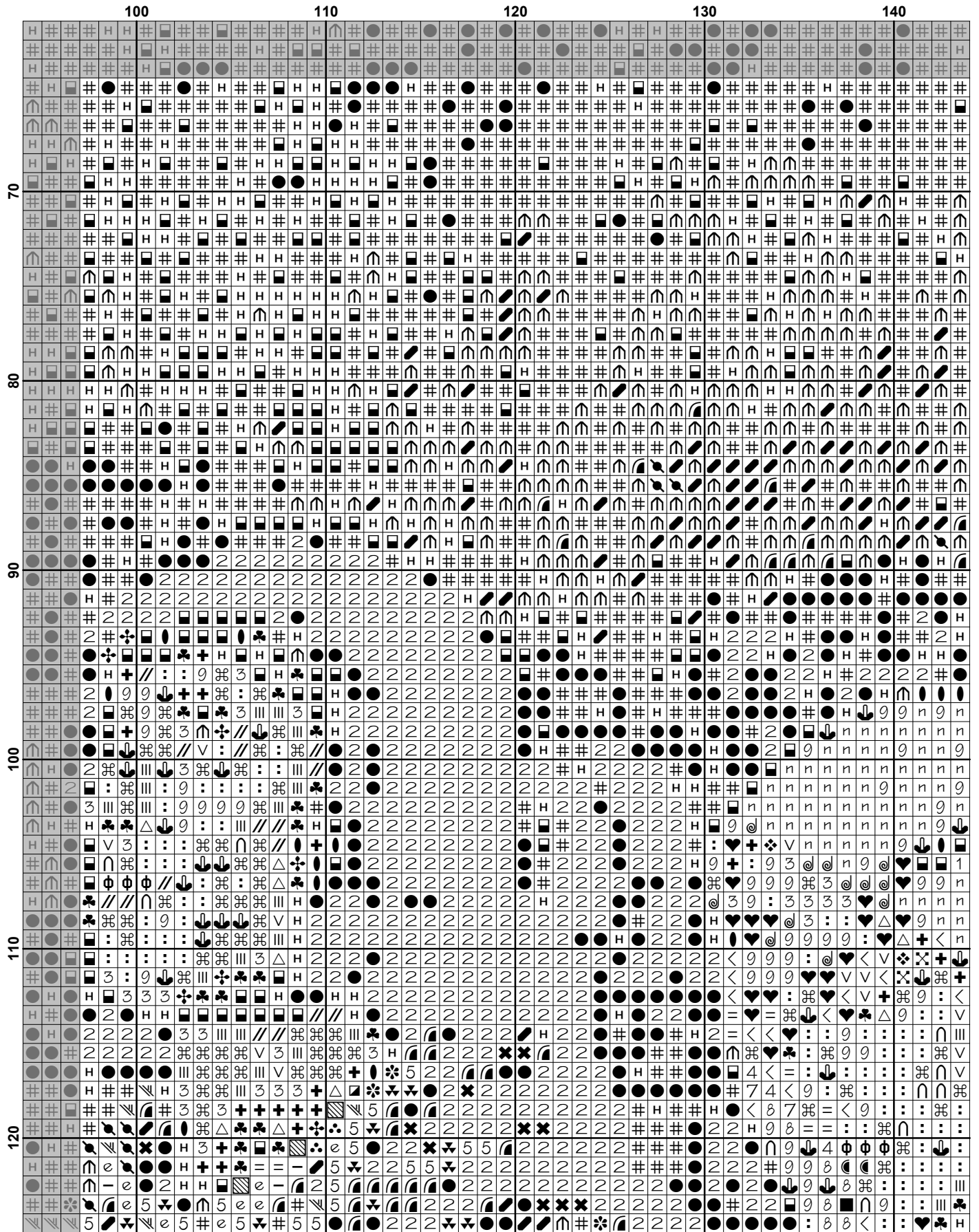


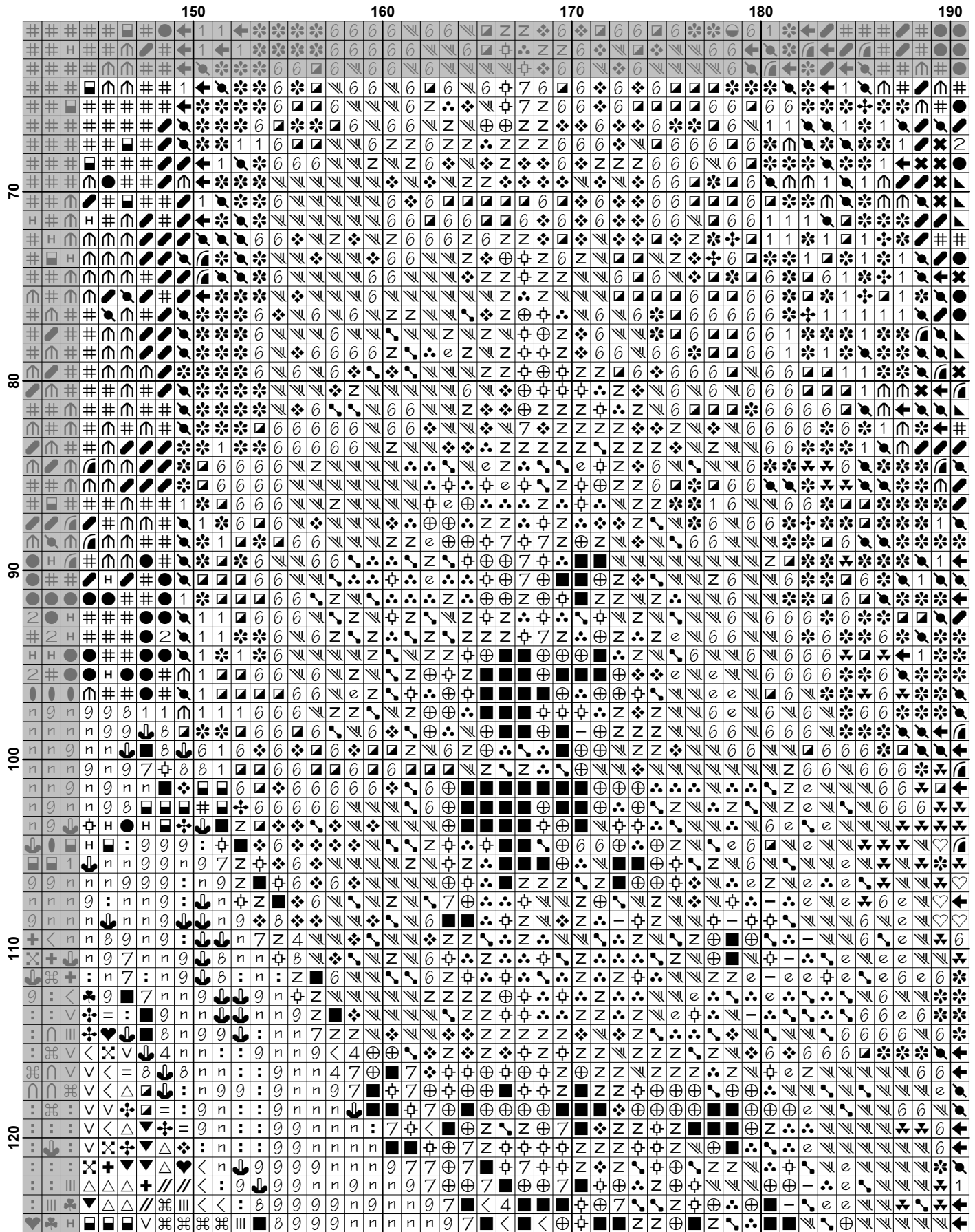


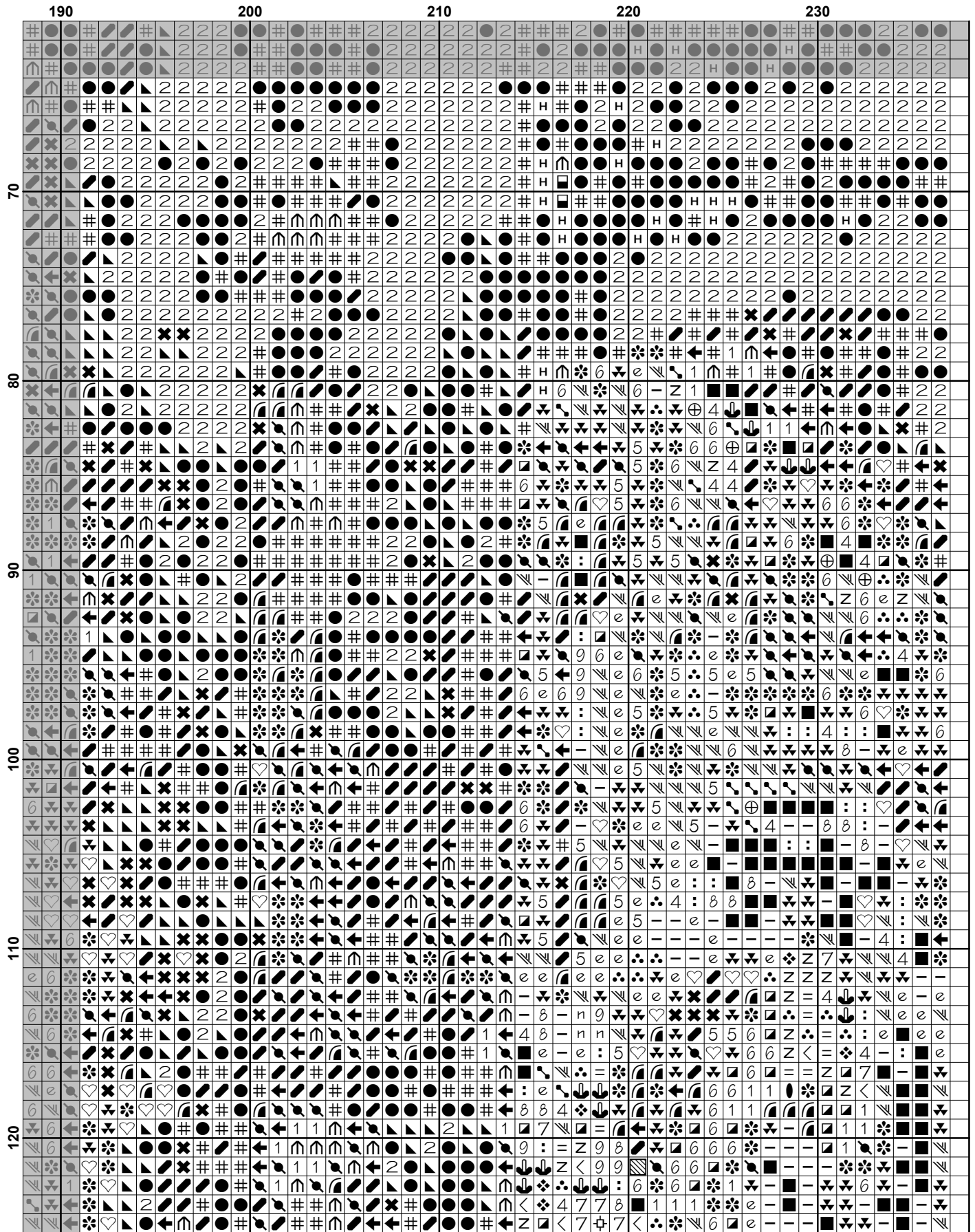


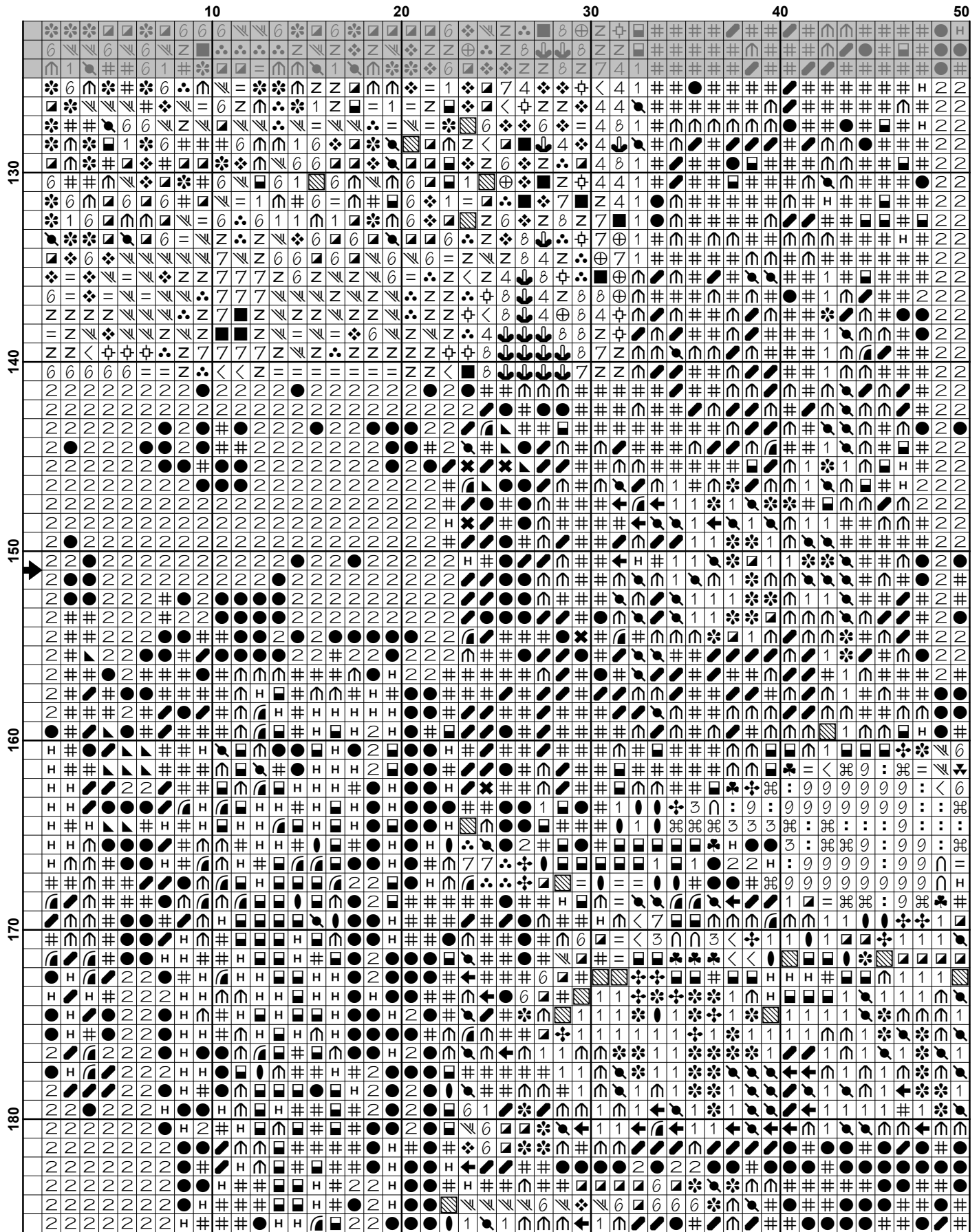
	10	20	30	40	50
70
80
90
100
110
120

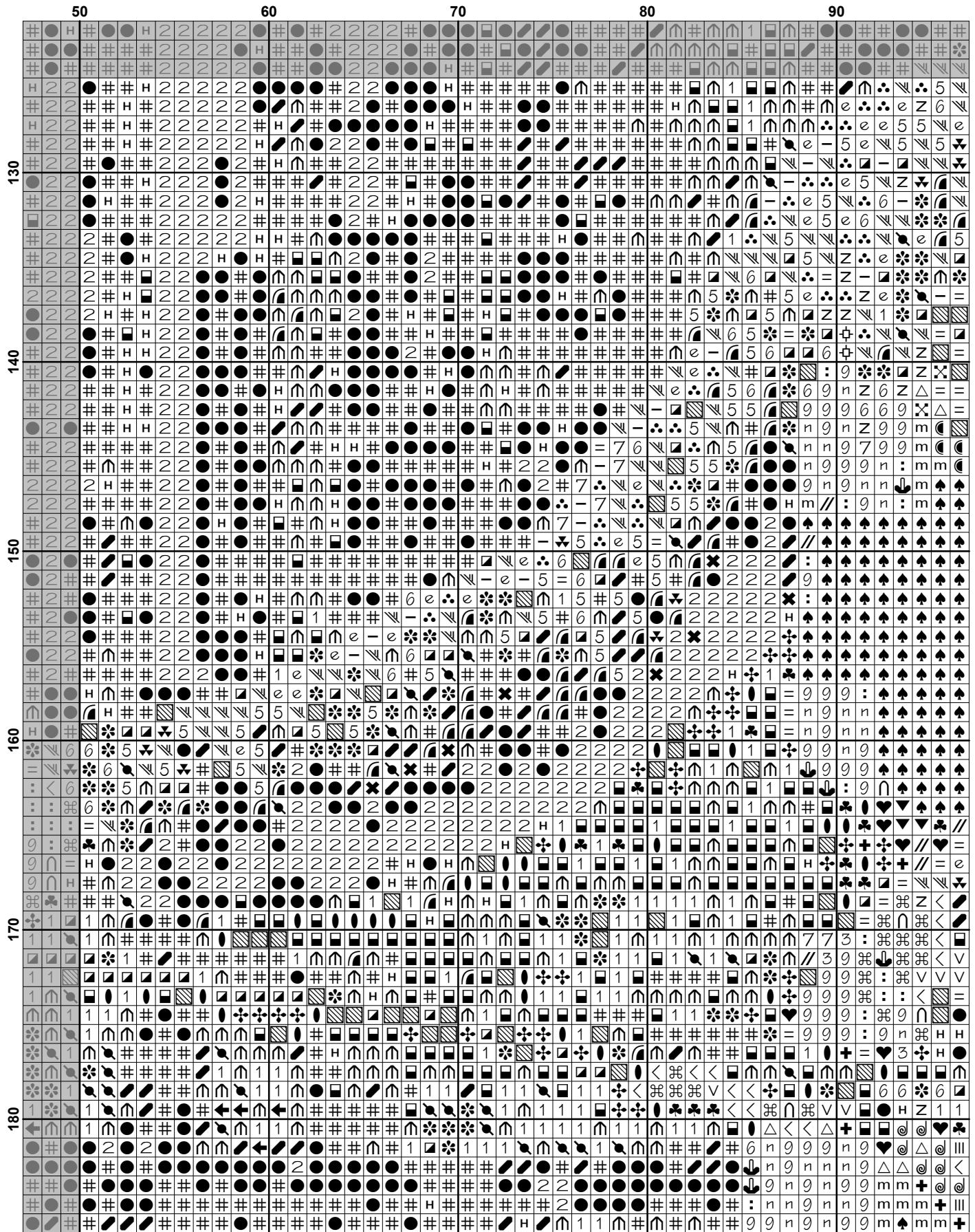


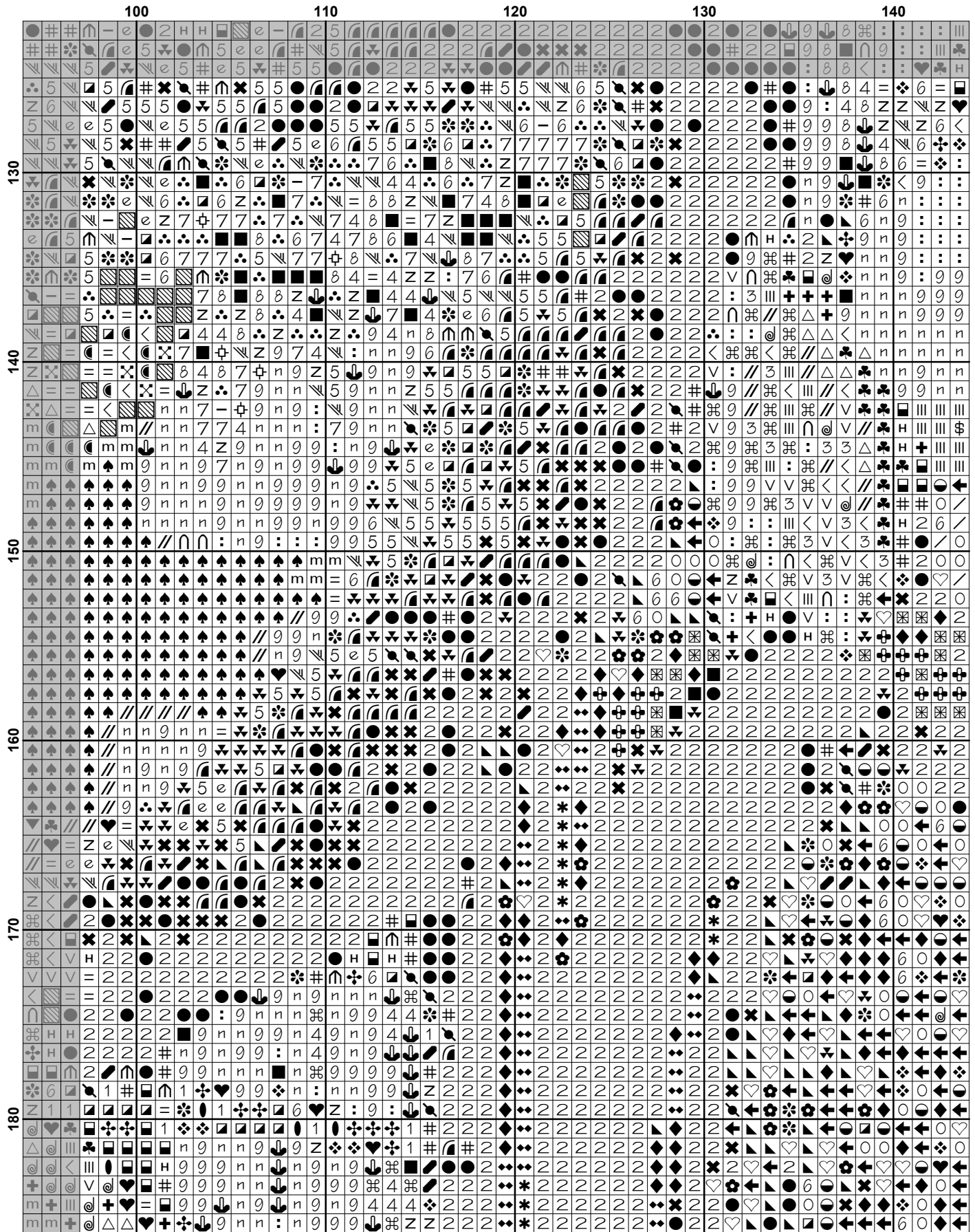


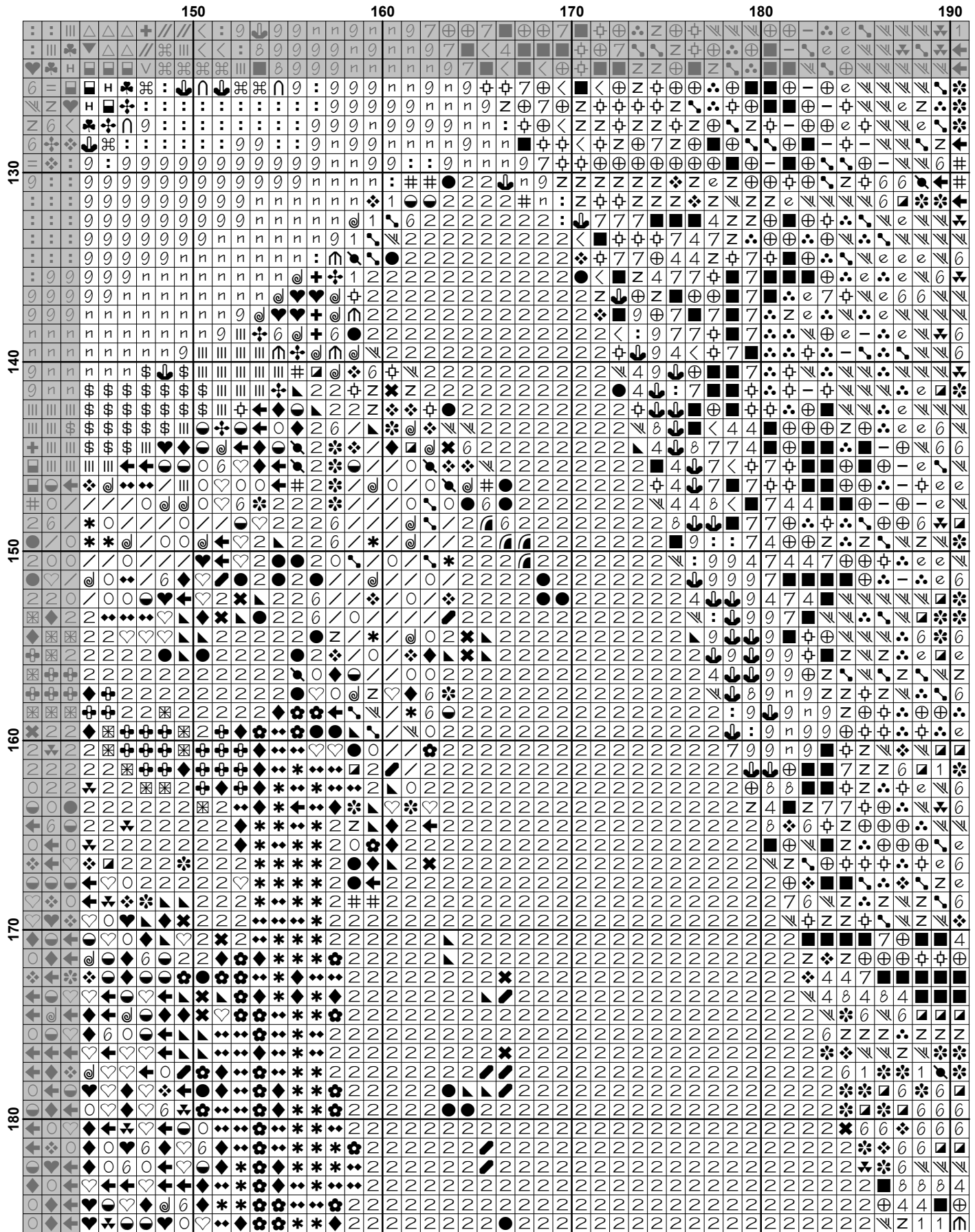


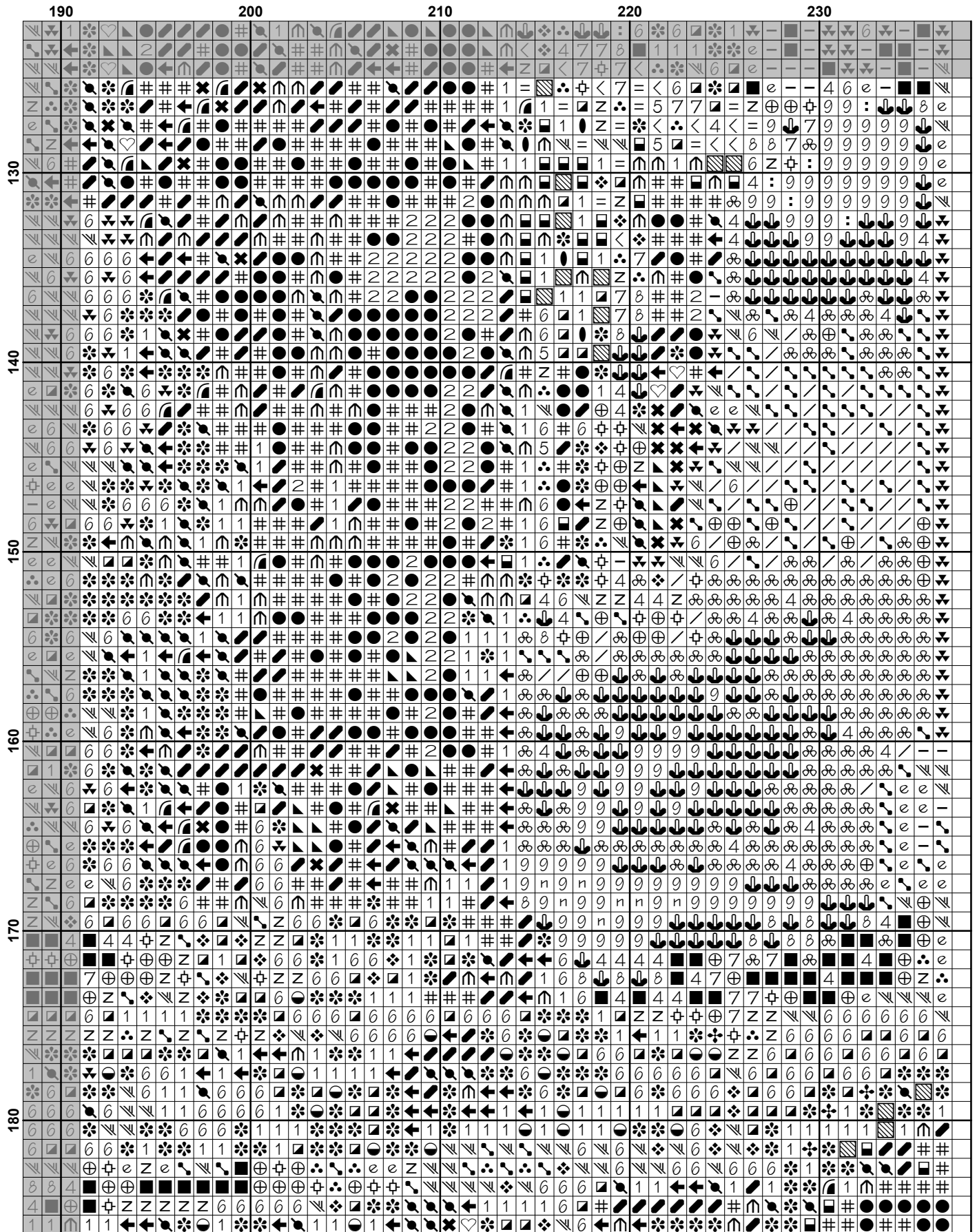


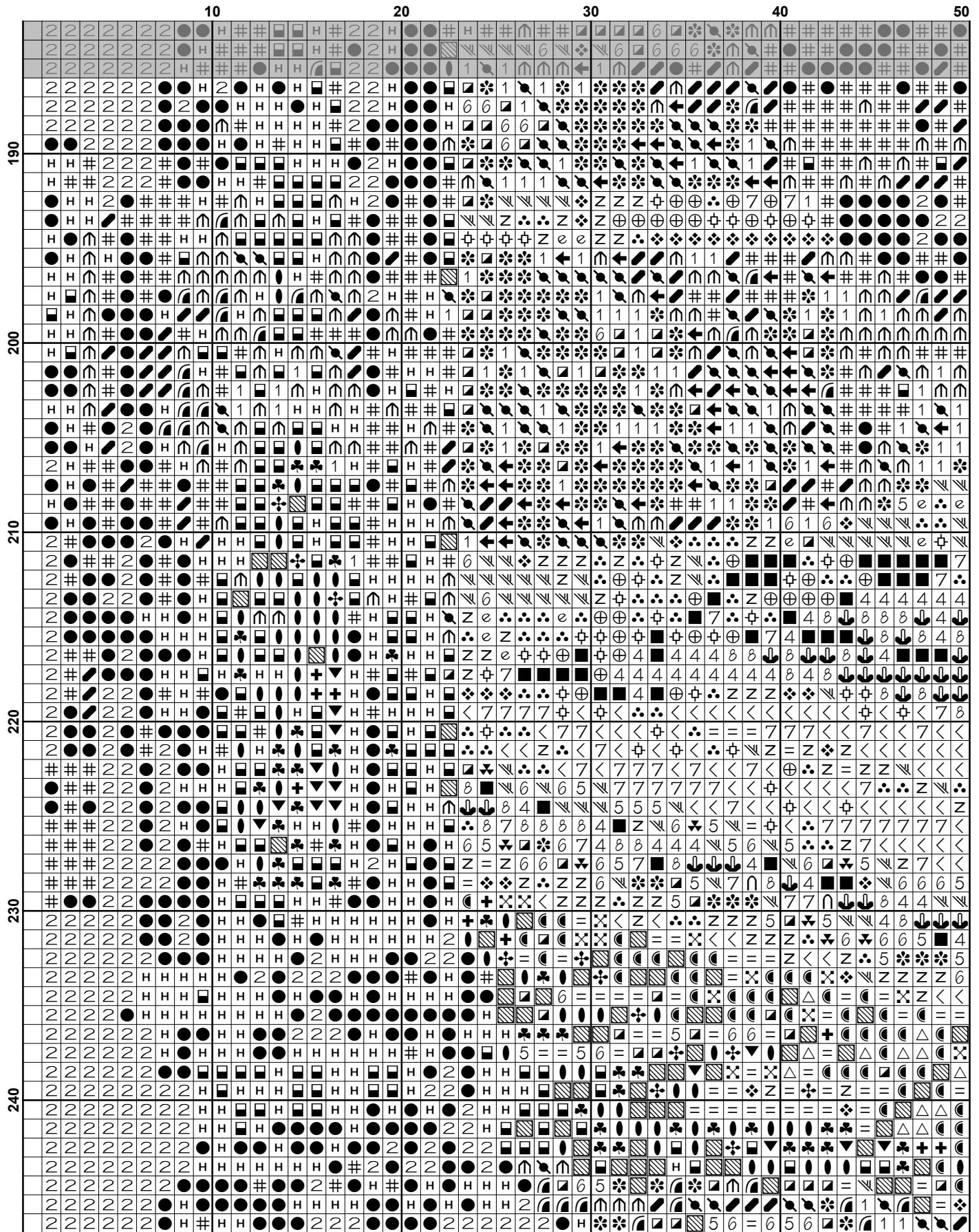


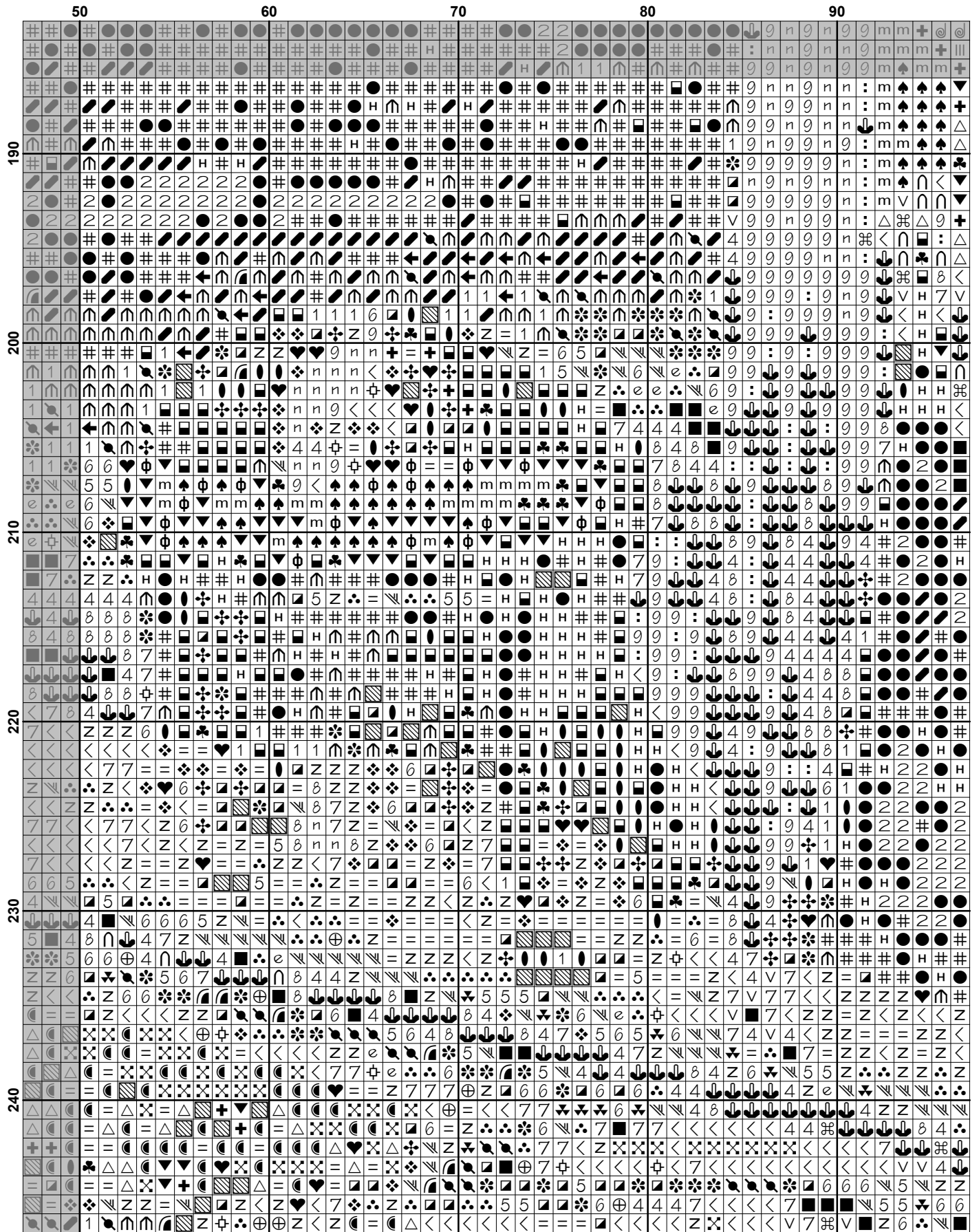


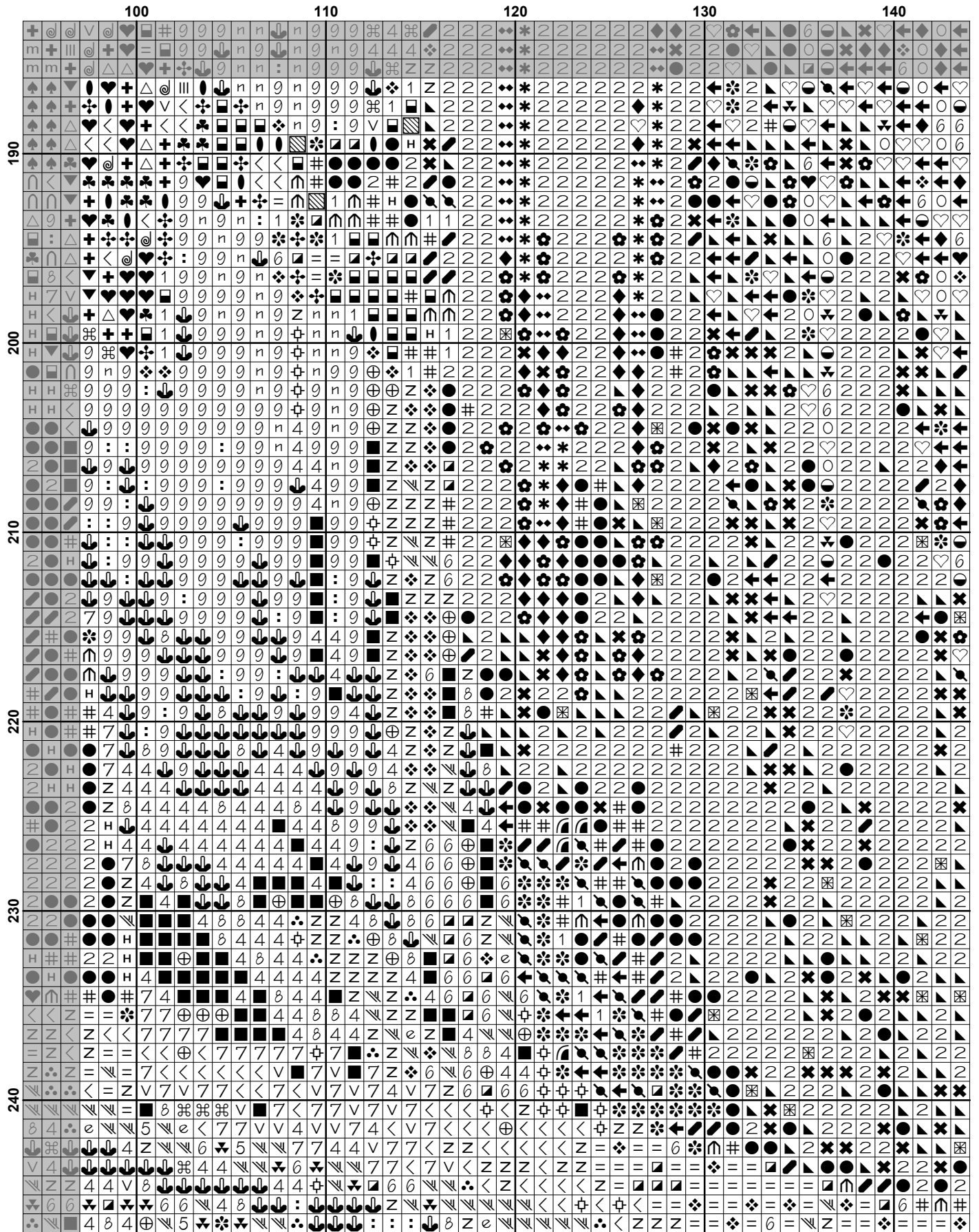


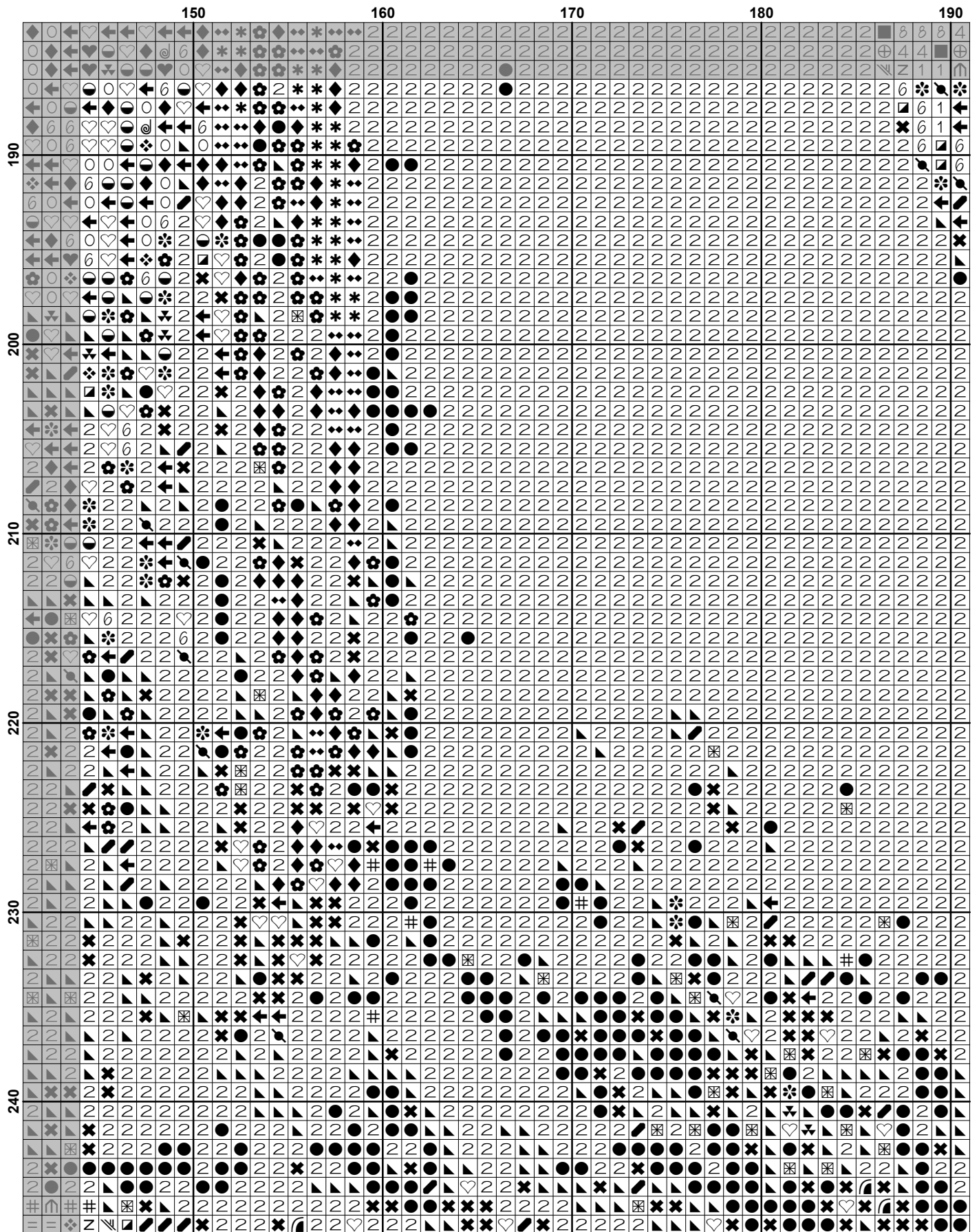


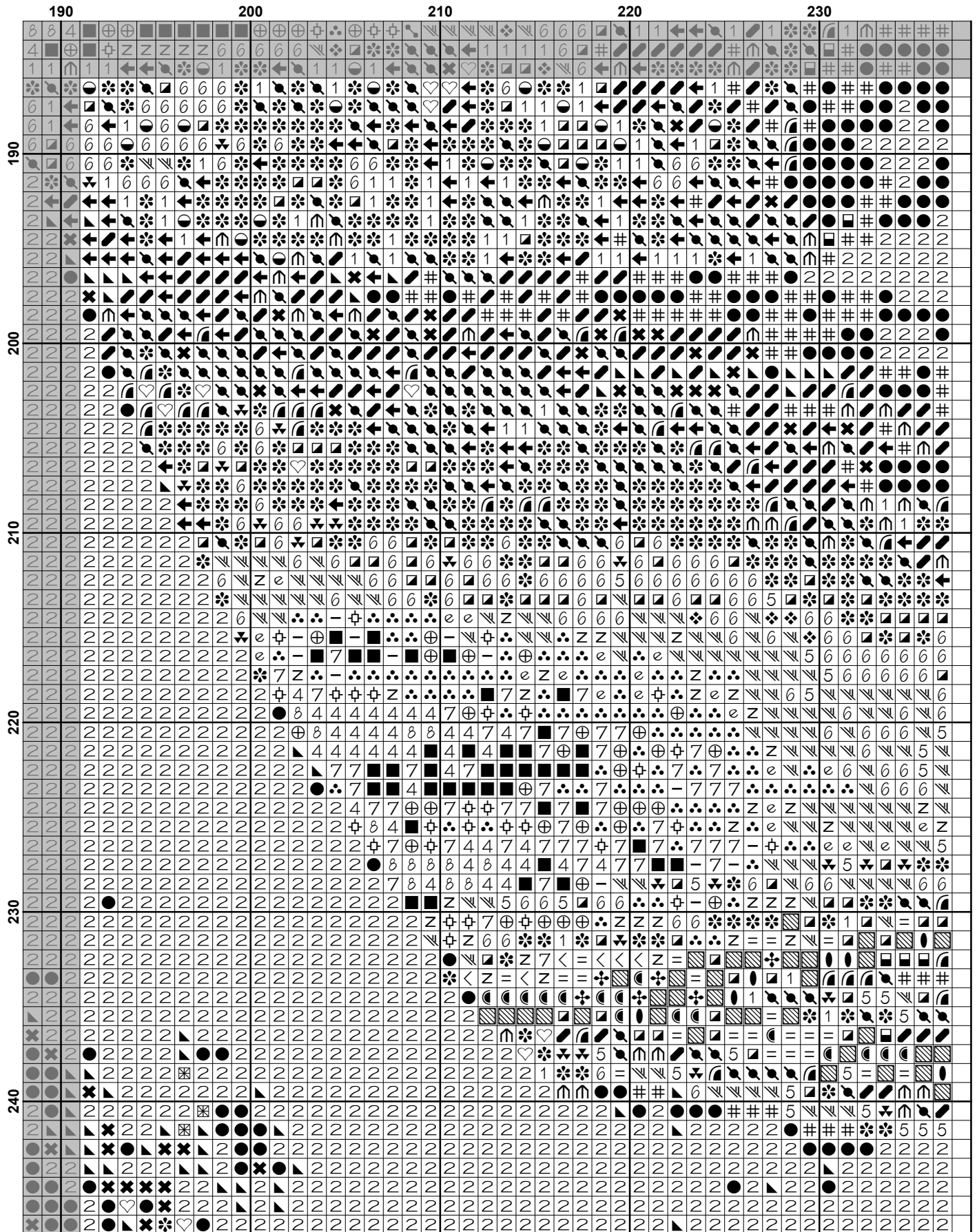


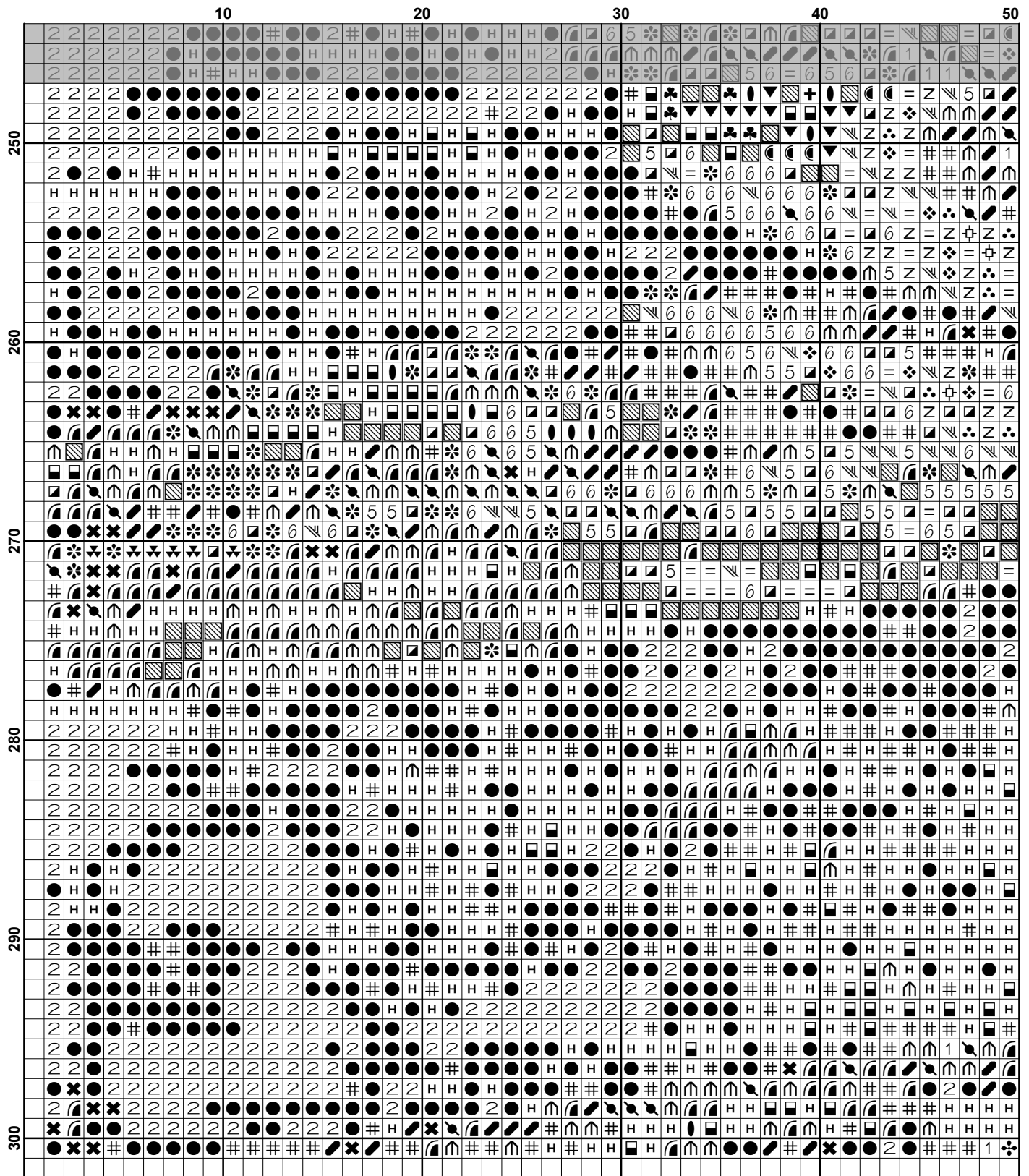


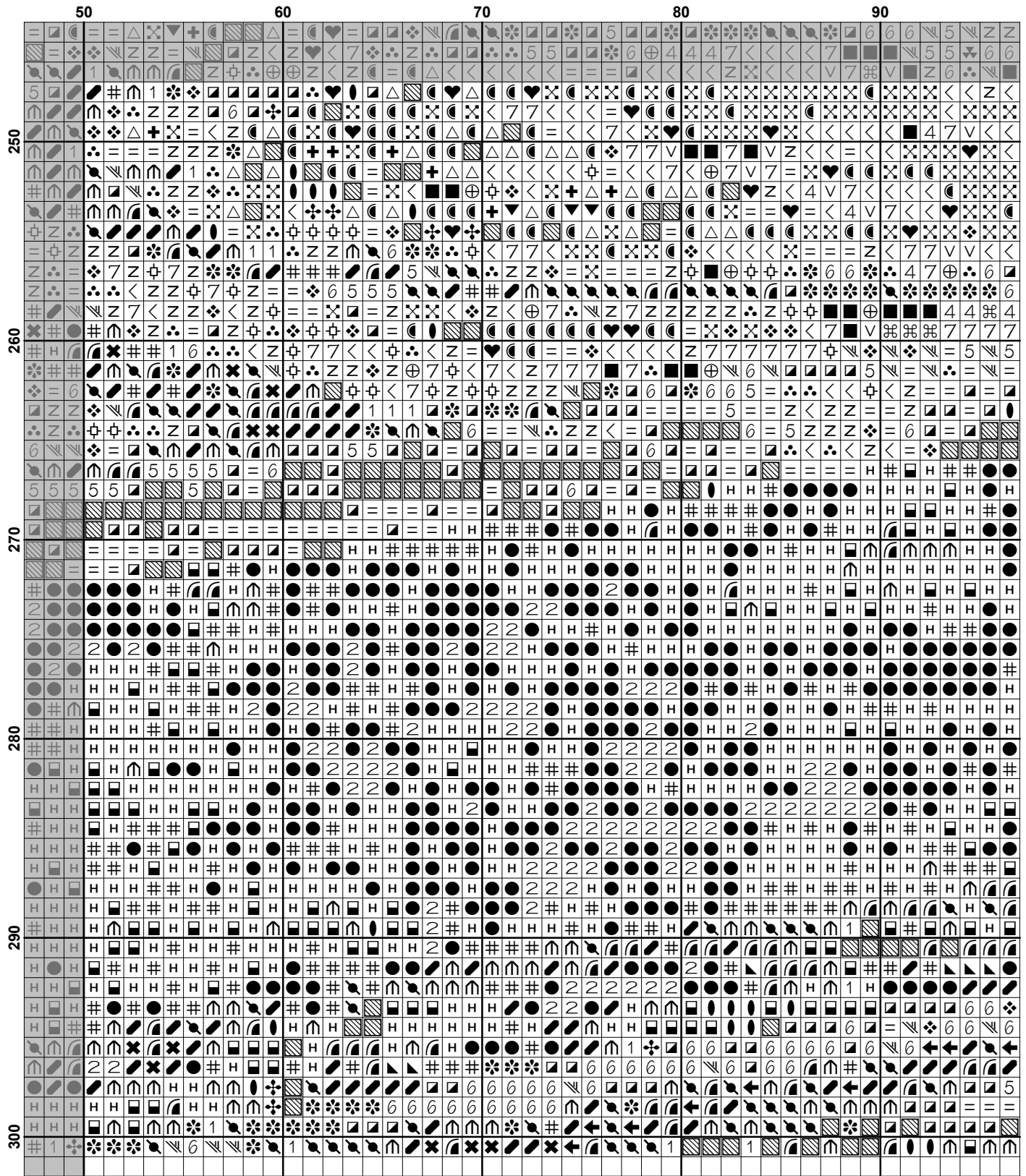


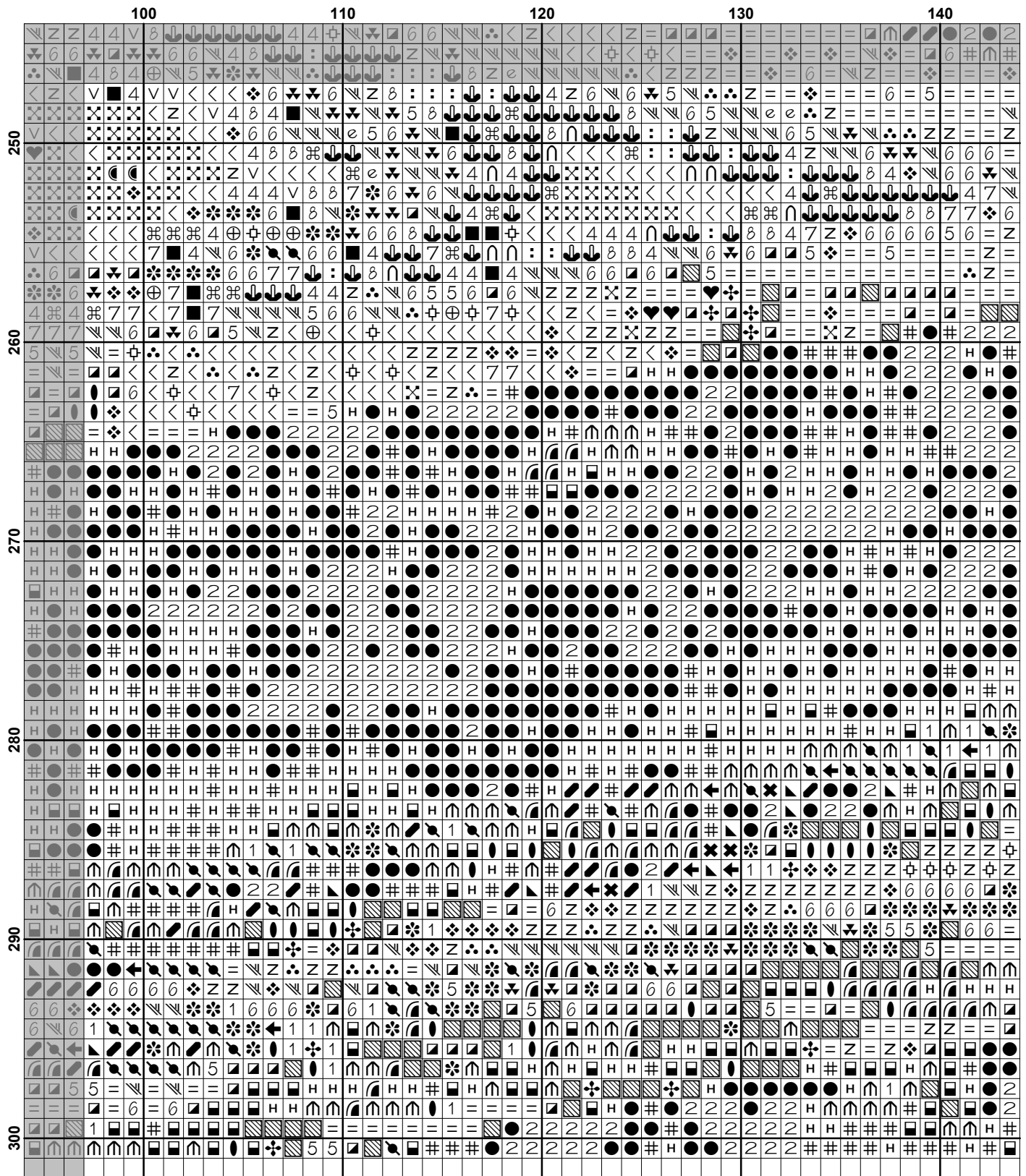


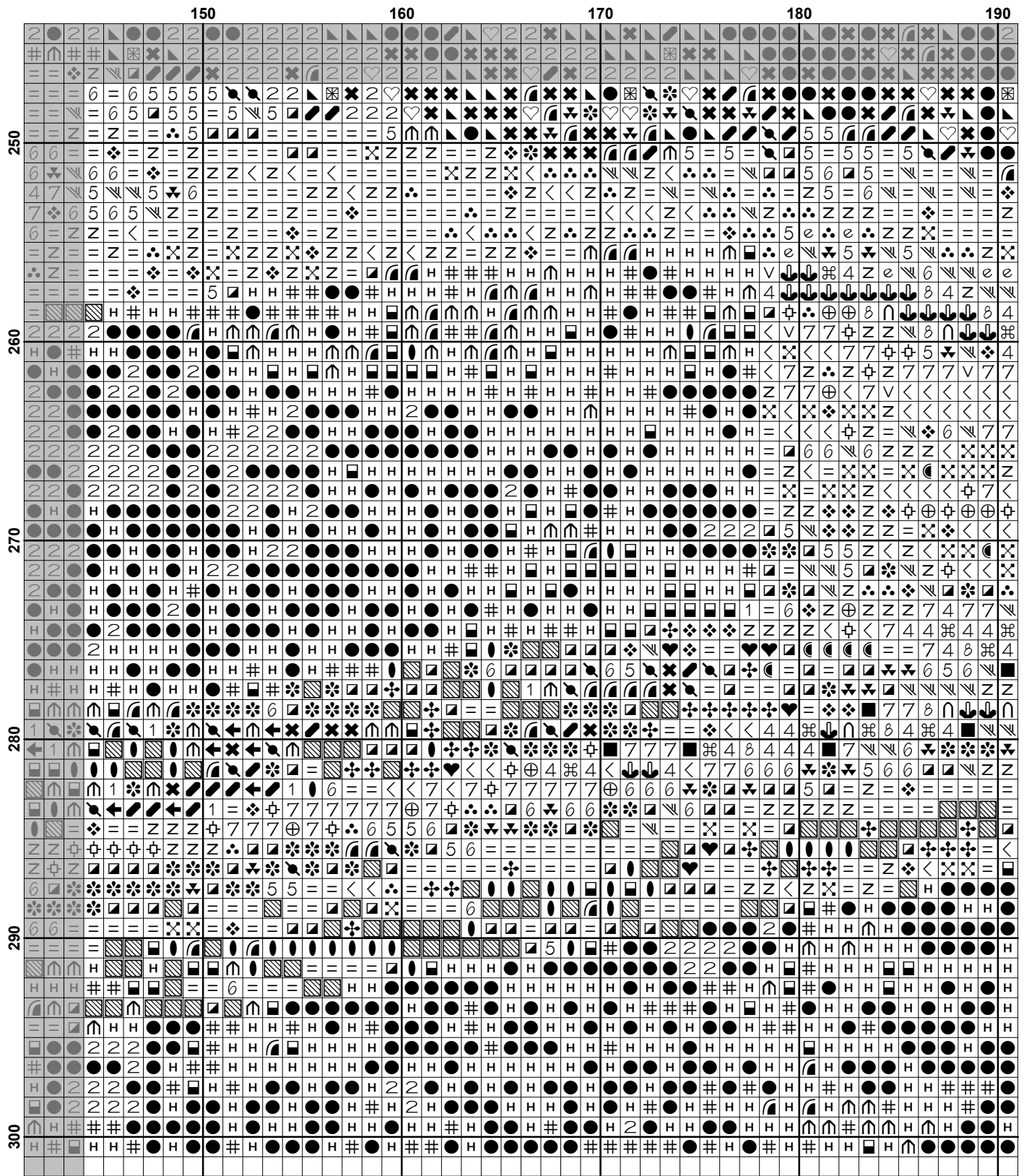


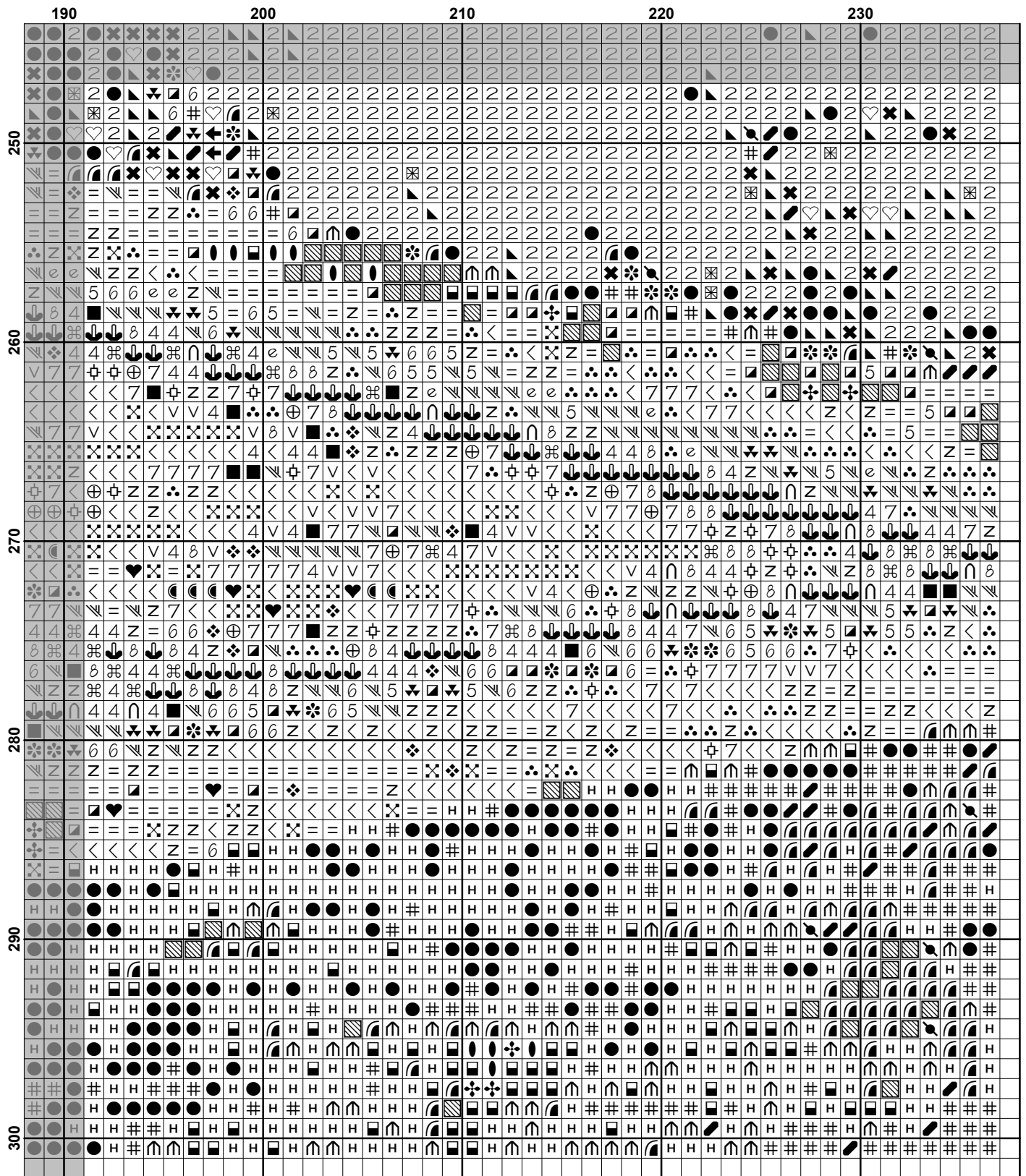



















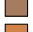










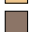


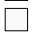





Pattern Name: The Dedication
Designed By: Artwork by Edmund Blair Leighton
Company: Artecy Cross Stitch
Copyright: Copyright Artecy Cross Stitch. All rights Reserved.
Fabric: Aida 14, White
 236w X 300h Stitches
Size(s): 14 Count, 16-3/4w X 21-3/8h in
 16 Count, 14-3/4w X 18-3/4h in
 18 Count, 13w X 16-5/8h in

Floss Used for Full Stitches:

Symbol	Strands	Type	Number	Color
	2	DMC	300	Mahogany-VY DK
	2	DMC	301	Mahogany-MD
	2	DMC	310	Black
	2	DMC	356	Terra Cotta-MD
	2	DMC	370	Mustard-MD
	2	DMC	372	Mustard-LT
	2	DMC	400	Mahogany-DK
	2	DMC	402	Mahogany-VY LT
	2	DMC	434	Brown-LT
	2	DMC	469	Avocado Green
	2	DMC	471	Avocado Green-VY LT
	2	DMC	520	Fern Green-DK
	2	DMC	606	Bright Orange-Red
	2	DMC	610	Drab Brown-DK
	2	DMC	611	Drab Brown
	2	DMC	612	Drab Brown-LT
	2	DMC	613	Drab Brown-VY LT
	2	DMC	632	Desert Sand-UL VY DK
	2	DMC	640	Beige Gray-VY DK
	2	DMC	645	Beaver Gray-VY DK
	2	DMC	647	Beaver Gray-MD
	2	DMC	727	Topaz-VY LT
	2	DMC	729	Old Gold-MD
	2	DMC	739	Tan-UL VY LT
	2	DMC	779	Cocoa-DK
	2	DMC	780	Topaz-UL VY DK
	2	DMC	801	Coffee Brown-DK
	2	DMC	823	Navy Blue-DK
	2	DMC	829	Golden Olive-VY DK
	2	DMC	841	Beige Brown-LT
	2	DMC	842	Beige Brown-VY LT
	2	DMC	890	Pistachio Green-UL DK
	2	DMC	902	Garnet-VY DK
	2	DMC	910	Emerald Green-DK
	2	DMC	911	Emerald Green-MD
	2	DMC	919	Red Copper
	2	DMC	920	Copper-MD
	2	DMC	930	Antique Blue-DK
	2	DMC	934	Black Avocado Green
	2	DMC	936	Avocado Green-VY DK
	2	DMC	938	Coffee Brown-UL DK
	2	DMC	946	Burnt Orange-MD
	2	DMC	951	Tawny-LT
	2	DMC	975	Golden Brown-DK
	2	DMC	3013	Khaki Green-LT

Symbol	Strands	Type	Number	Color
	e	2	DMC 3022	Brown Gray-MD
		2	DMC 3031	Mocha Brown-VY DK
	<	2	DMC 3064	Desert Sand
	0	2	DMC 3346	Hunter Green
	&	2	DMC 3348	Yellow Green-LT
		2	DMC 3364	Pine Green
	●	2	DMC 3371	Black Brown
	9	2	DMC 3770	Tawny-VY LT
	v	2	DMC 3771	Terra Cotta-UL VY LT
	=	2	DMC 3772	Desert Sand-VY DK
	//	2	DMC 3776	Mahogany-LT
	∩	2	DMC 3779	Terra Cotta-UL VY LT
		2	DMC 3781	Mocha Brown-DK
	■	2	DMC 3782	Mocha Brown-LT
	✕	2	DMC 3799	Pewter Gray-VY DK
	◆	2	DMC 3818	Emerald Green-UL VY DK
		2	DMC 3827	Golden Brown-Pale
	♥	2	DMC 3829	Old Gold-VY DK
	☾	2	DMC 3830	Terra Cotta-MD
	⌘	2	DMC 3856	Mahogany-UL VY LT
	5	2	DMC 3860	Cocoa
	▣	2	DMC 3862	Mocha Beige-DK
	7	2	DMC 3864	Mocha Beige-LT
	n	2	DMC 3865	Winter White

Notes:

The middle of this pattern can be found on page 13 and is 119 stitches across and 151 stitches down.

Pattern layout using page numbers in top left.

```

1  2  3  4  5
6  7  8  9 10
11 12 13 14 15
16 17 18 19 20
21 22 23 24 25

```

Usage Summary

Strands Per Skein: 6

Skein Length: 313.0 in

Type	Number	Full	Half	Quarter	Petite	Back(in)	Str(in)	Spec(in)	French	Bead	Skein Est.
DMC	300	1825	0	0	0	0.0	0.0	0.0	0	0	1.000
DMC	301	102	0	0	0	0.0	0.0	0.0	0	0	1.000
DMC	310	14115	0	0	0	0.0	0.0	0.0	0	0	7.000
DMC	356	328	0	0	0	0.0	0.0	0.0	0	0	1.000
DMC	370	617	0	0	0	0.0	0.0	0.0	0	0	1.000
DMC	372	504	0	0	0	0.0	0.0	0.0	0	0	1.000
DMC	400	160	0	0	0	0.0	0.0	0.0	0	0	1.000
DMC	402	53	0	0	0	0.0	0.0	0.0	0	0	1.000
DMC	434	283	0	0	0	0.0	0.0	0.0	0	0	1.000
DMC	469	152	0	0	0	0.0	0.0	0.0	0	0	1.000
DMC	471	127	0	0	0	0.0	0.0	0.0	0	0	1.000
DMC	520	275	0	0	0	0.0	0.0	0.0	0	0	1.000
DMC	606	49	0	0	0	0.0	0.0	0.0	0	0	1.000
DMC	610	2445	0	0	0	0.0	0.0	0.0	0	0	2.000
DMC	611	1878	0	0	0	0.0	0.0	0.0	0	0	1.000
DMC	612	1391	0	0	0	0.0	0.0	0.0	0	0	1.000
DMC	613	644	0	0	0	0.0	0.0	0.0	0	0	1.000
DMC	632	747	0	0	0	0.0	0.0	0.0	0	0	1.000
DMC	640	2023	0	0	0	0.0	0.0	0.0	0	0	1.000
DMC	645	619	0	0	0	0.0	0.0	0.0	0	0	1.000
DMC	647	171	0	0	0	0.0	0.0	0.0	0	0	1.000
DMC	727	25	0	0	0	0.0	0.0	0.0	0	0	1.000
DMC	729	92	0	0	0	0.0	0.0	0.0	0	0	1.000
DMC	739	918	0	0	0	0.0	0.0	0.0	0	0	1.000
DMC	779	921	0	0	0	0.0	0.0	0.0	0	0	1.000
DMC	780	87	0	0	0	0.0	0.0	0.0	0	0	1.000
DMC	801	2114	0	0	0	0.0	0.0	0.0	0	0	1.000
DMC	823	90	0	0	0	0.0	0.0	0.0	0	0	1.000
DMC	829	994	0	0	0	0.0	0.0	0.0	0	0	1.000
DMC	841	913	0	0	0	0.0	0.0	0.0	0	0	1.000
DMC	842	392	0	0	0	0.0	0.0	0.0	0	0	1.000
DMC	890	197	0	0	0	0.0	0.0	0.0	0	0	1.000
DMC	902	3407	0	0	0	0.0	0.0	0.0	0	0	2.000
DMC	910	141	0	0	0	0.0	0.0	0.0	0	0	1.000
DMC	911	125	0	0	0	0.0	0.0	0.0	0	0	1.000
DMC	919	85	0	0	0	0.0	0.0	0.0	0	0	1.000
DMC	920	24	0	0	0	0.0	0.0	0.0	0	0	1.000
DMC	930	38	0	0	0	0.0	0.0	0.0	0	0	1.000
DMC	934	1022	0	0	0	0.0	0.0	0.0	0	0	1.000
DMC	936	790	0	0	0	0.0	0.0	0.0	0	0	1.000
DMC	938	7387	0	0	0	0.0	0.0	0.0	0	0	4.000
DMC	946	266	0	0	0	0.0	0.0	0.0	0	0	1.000
DMC	951	398	0	0	0	0.0	0.0	0.0	0	0	1.000
DMC	975	344	0	0	0	0.0	0.0	0.0	0	0	1.000
DMC	3013	436	0	0	0	0.0	0.0	0.0	0	0	1.000
DMC	3022	373	0	0	0	0.0	0.0	0.0	0	0	1.000
DMC	3031	1825	0	0	0	0.0	0.0	0.0	0	0	1.000
DMC	3064	871	0	0	0	0.0	0.0	0.0	0	0	1.000
DMC	3346	109	0	0	0	0.0	0.0	0.0	0	0	1.000
DMC	3348	193	0	0	0	0.0	0.0	0.0	0	0	1.000
DMC	3364	277	0	0	0	0.0	0.0	0.0	0	0	1.000

Type	Number	Full	Half	Quarter	Petite	Back(in)	Str(in)	Spec(in)	French	Bead	Skein Est.
■ DMC	3371	8513	0	0	0	0.0	0.0	0.0	0	0	4.000
■ DMC	3770	1001	0	0	0	0.0	0.0	0.0	0	0	1.000
■ DMC	3771	136	0	0	0	0.0	0.0	0.0	0	0	1.000
■ DMC	3772	1040	0	0	0	0.0	0.0	0.0	0	0	1.000
■ DMC	3776	52	0	0	0	0.0	0.0	0.0	0	0	1.000
■ DMC	3779	72	0	0	0	0.0	0.0	0.0	0	0	1.000
■ DMC	3781	1353	0	0	0	0.0	0.0	0.0	0	0	1.000
■ DMC	3782	630	0	0	0	0.0	0.0	0.0	0	0	1.000
■ DMC	3799	689	0	0	0	0.0	0.0	0.0	0	0	1.000
■ DMC	3818	253	0	0	0	0.0	0.0	0.0	0	0	1.000
■ DMC	3827	67	0	0	0	0.0	0.0	0.0	0	0	1.000
■ DMC	3829	148	0	0	0	0.0	0.0	0.0	0	0	1.000
■ DMC	3830	213	0	0	0	0.0	0.0	0.0	0	0	1.000
■ DMC	3856	235	0	0	0	0.0	0.0	0.0	0	0	1.000
■ DMC	3860	430	0	0	0	0.0	0.0	0.0	0	0	1.000
■ DMC	3862	1401	0	0	0	0.0	0.0	0.0	0	0	1.000
■ DMC	3864	675	0	0	0	0.0	0.0	0.0	0	0	1.000
■ DMC	3865	530	0	0	0	0.0	0.0	0.0	0	0	1.000