



# A Farmyard in Winter

Copyright of Artecy Cross Stitch  
[www.artecy.com](http://www.artecy.com)



Completed Size = 200w X 150h Stitches

14 Count, 14.5w X 11h inches

16 Count, 12.5w X 9.5h inches

18 Count, 11.5w X 8.5h inches

Uses 41 DMC cotton colours. Only full cross stitches are used in this pattern.

# *Pattern Instructions*

\* This pattern can be worked on any fabric type, colour or count you prefer. To work out the size of the finished article, take the number of stitches wide and high and divide it by the count of your fabric (e.14,16,18 count aida etc) to get the size in inches. Times it by 2.5 to get centimetres. We have the sizes in inches shown on the previous page. Also leave at least a few inches of fabric around each side of the design to assist in framing. The higher the fabric count the smaller the completed project will be.

\* To put the pattern together look in the top and bottom corners. The page numbers in brackets show which page number it joins up to. Page 1 always starts at the top left hand side of the pattern.

\* You should begin at the centre of the pattern. To find the centre of the pattern it is just a matter of laying the pattern out and locating the arrows at the top and left hand side of the patterns, they are determined by dividing the stitch numbers wide and high in half. Where the two points meet in the middle, that is the centre.

\* The easiest way to stitch this pattern, as it has multiple pages, is to stitch one page at a time.

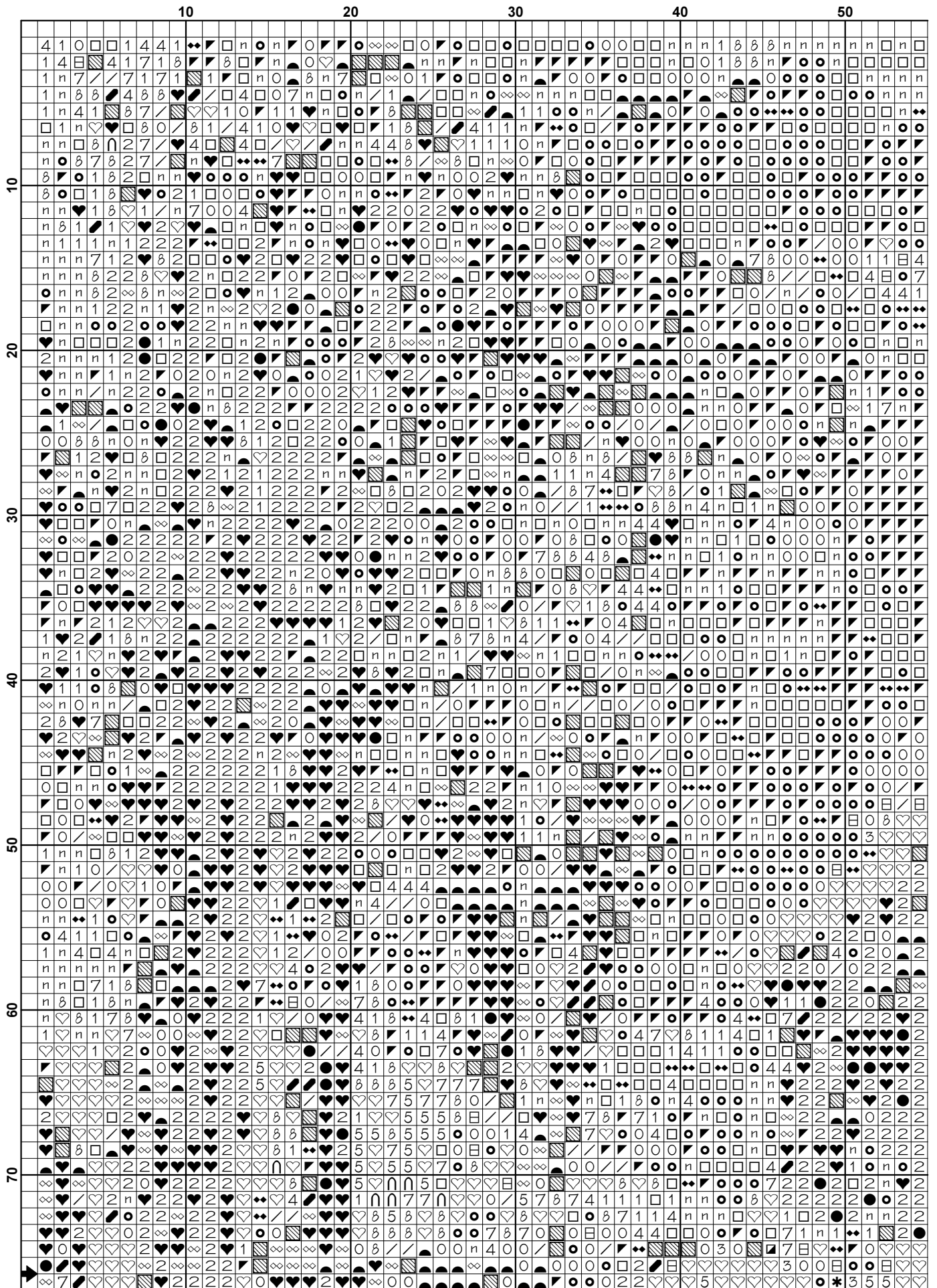
\* We suggest using two strands of floss for each stitch and one strand for backstitching if the pattern calls for it.

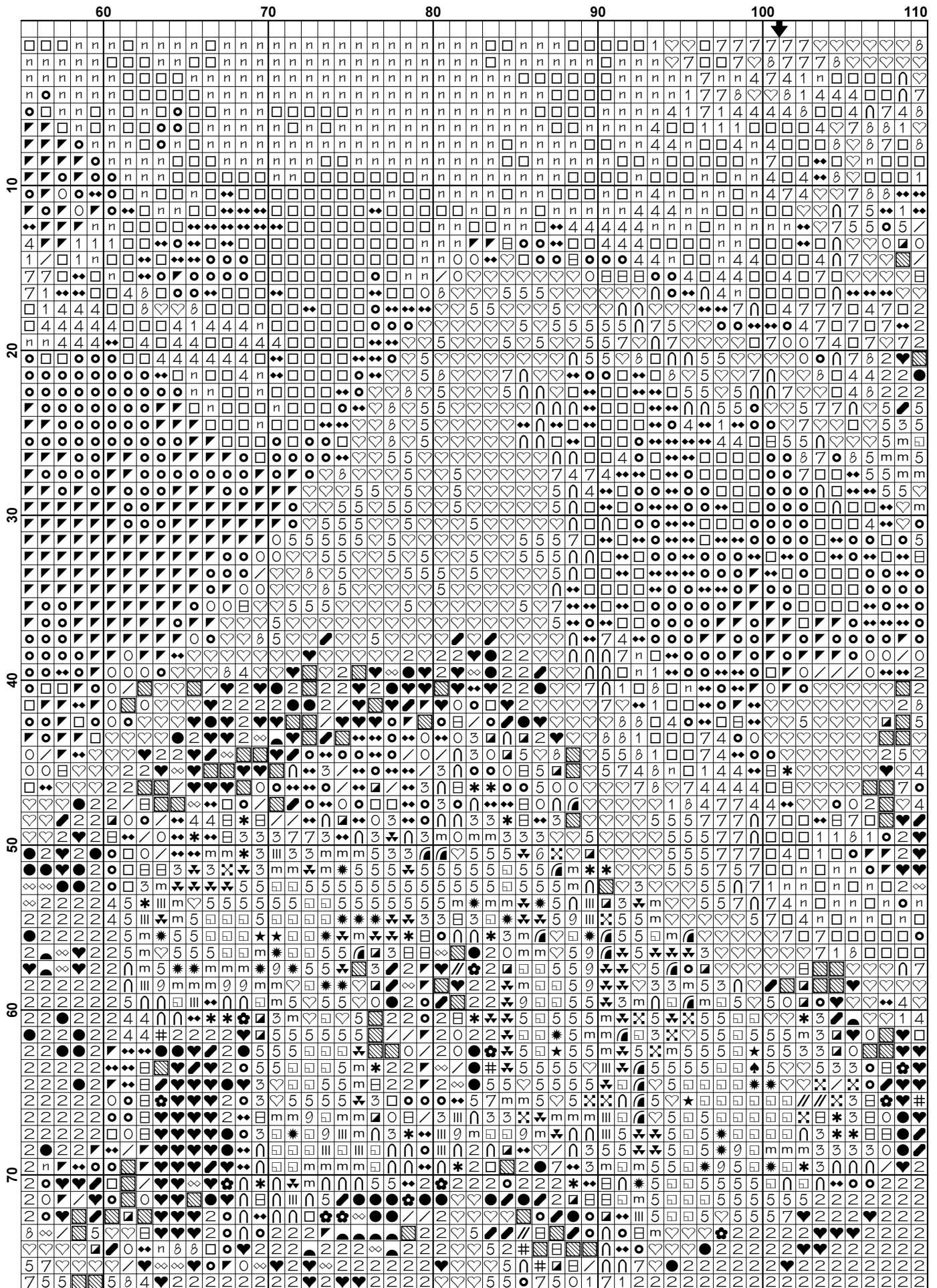
We hope you enjoy stitching our pattern.

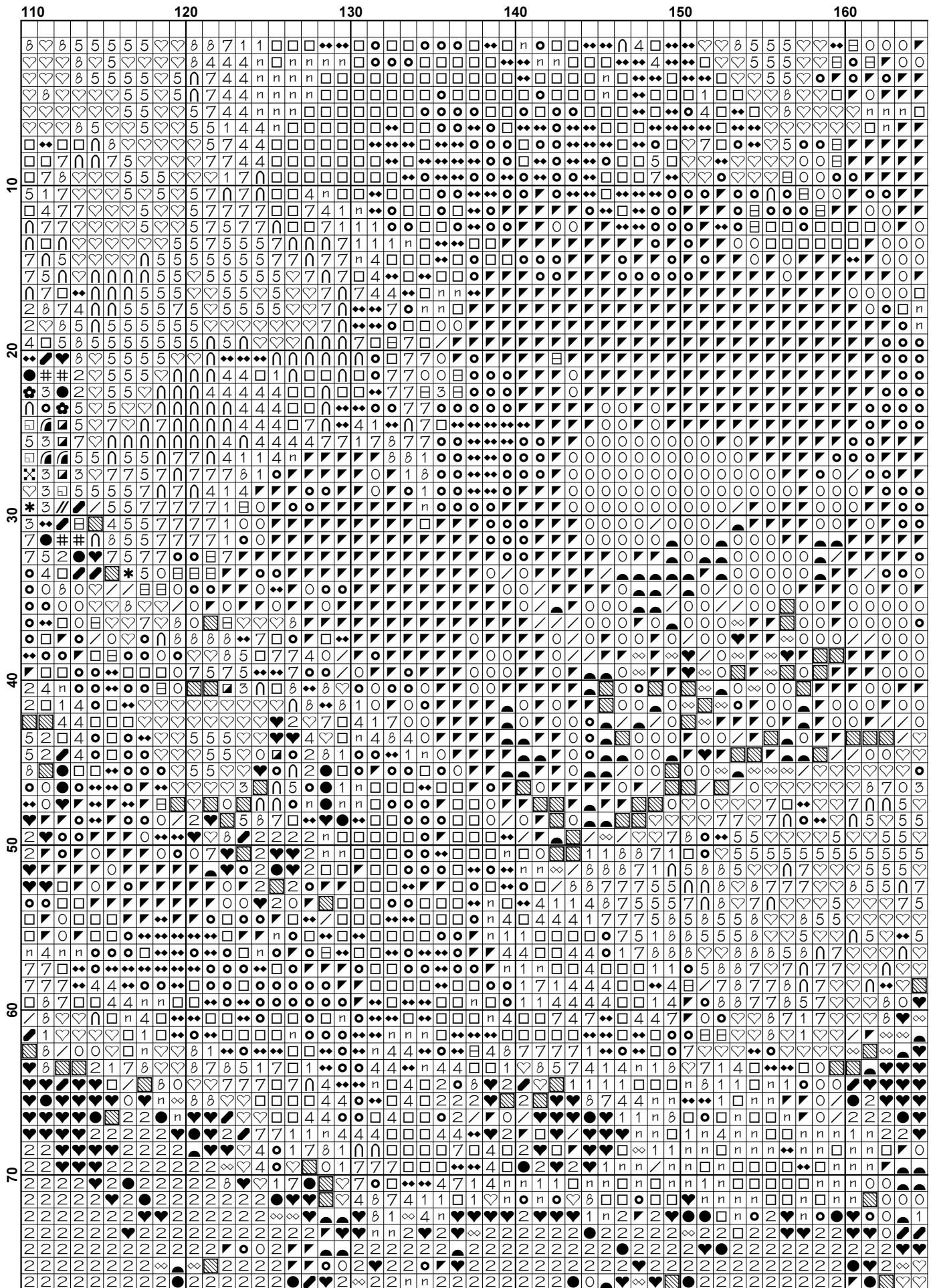
Thanks and Best Wishes  
Tereena Clarke

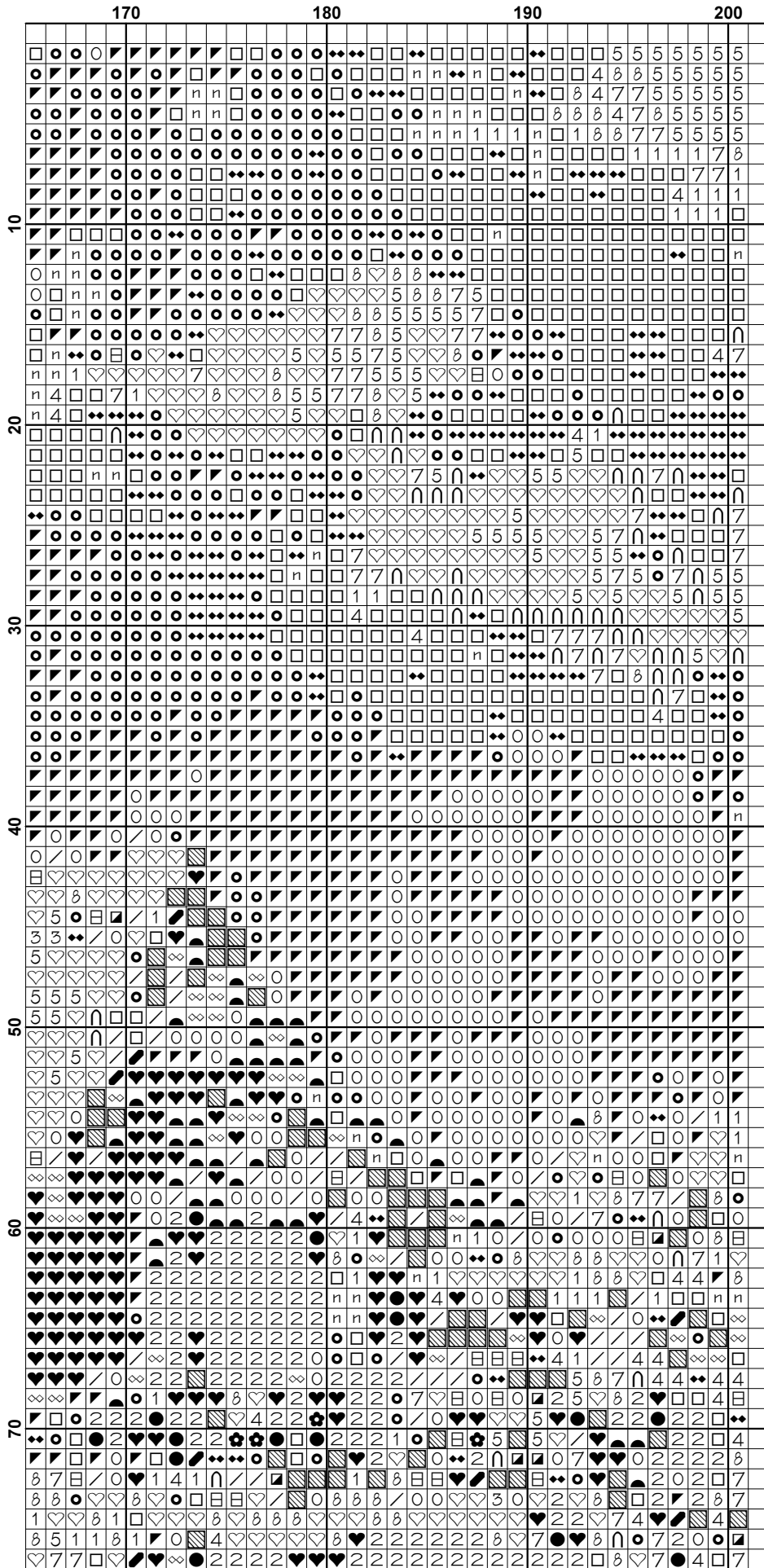
Artecy Cross Stitch  
Po Box 3474  
Tuggerah, NSW 2259  
Australia

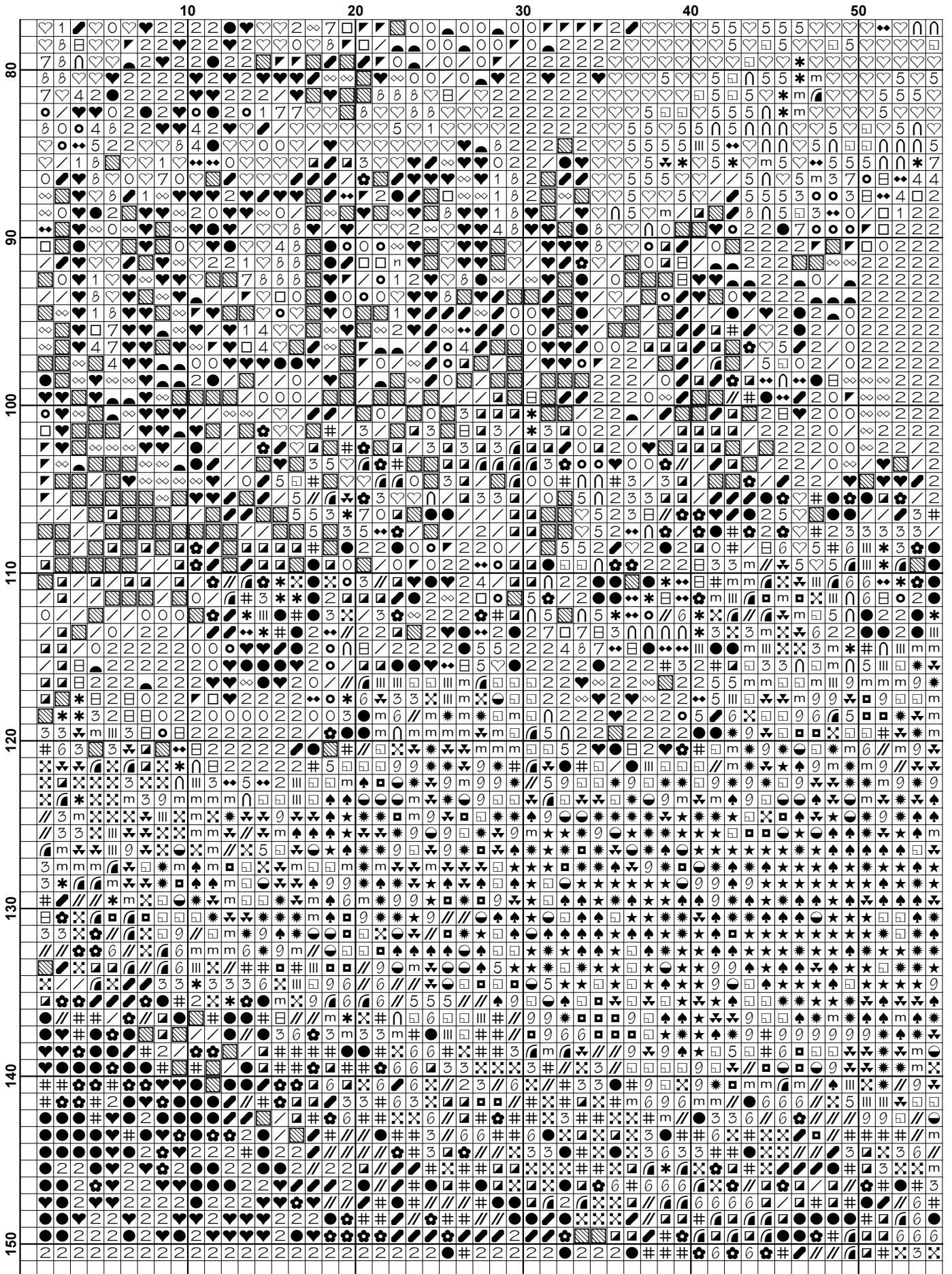
Website: [www.artecy.com](http://www.artecy.com)  
Email: [artecy@artecy.com](mailto:artecy@artecy.com) or [sls@comcen.com.au](mailto:sls@comcen.com.au)



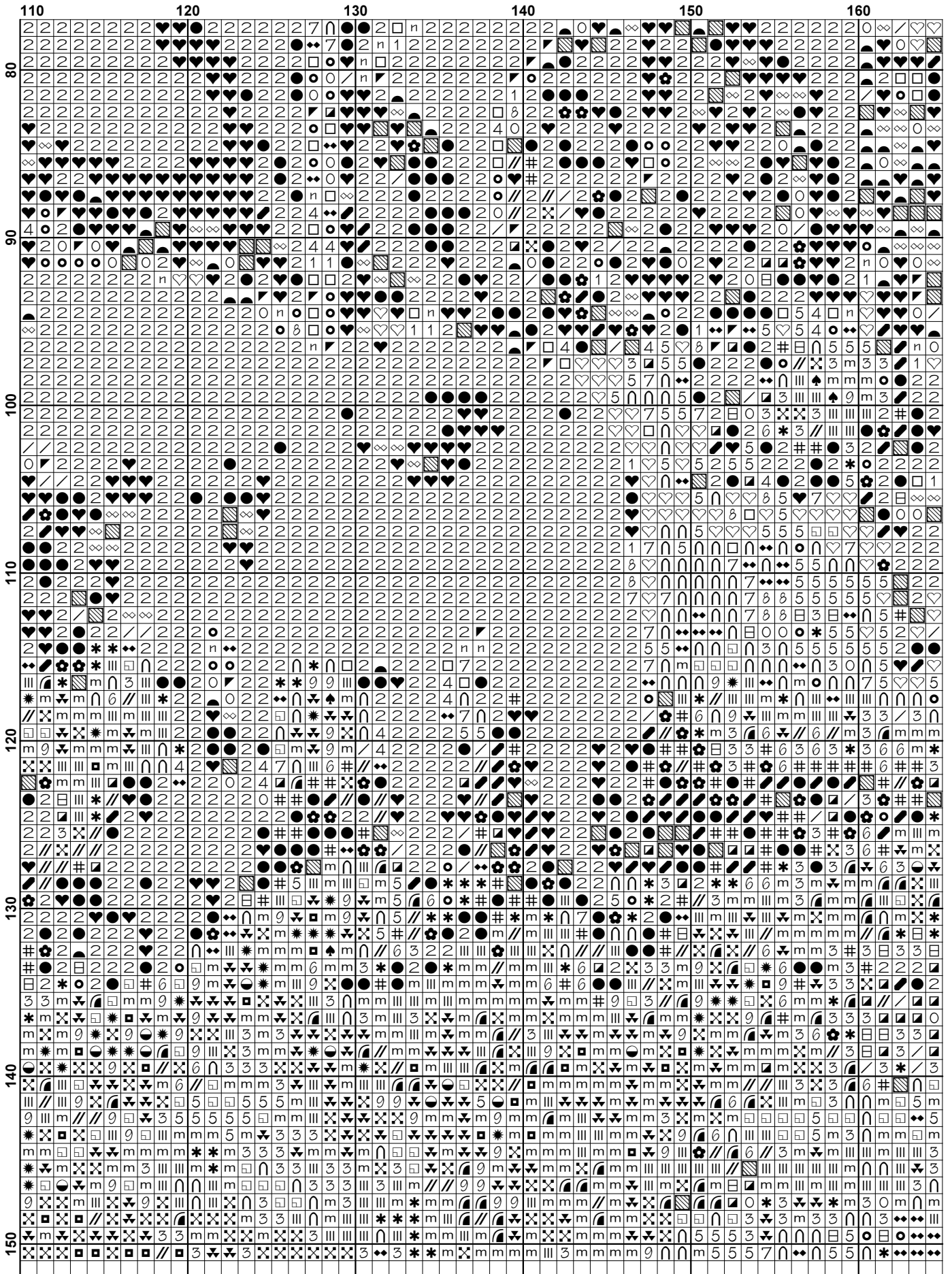


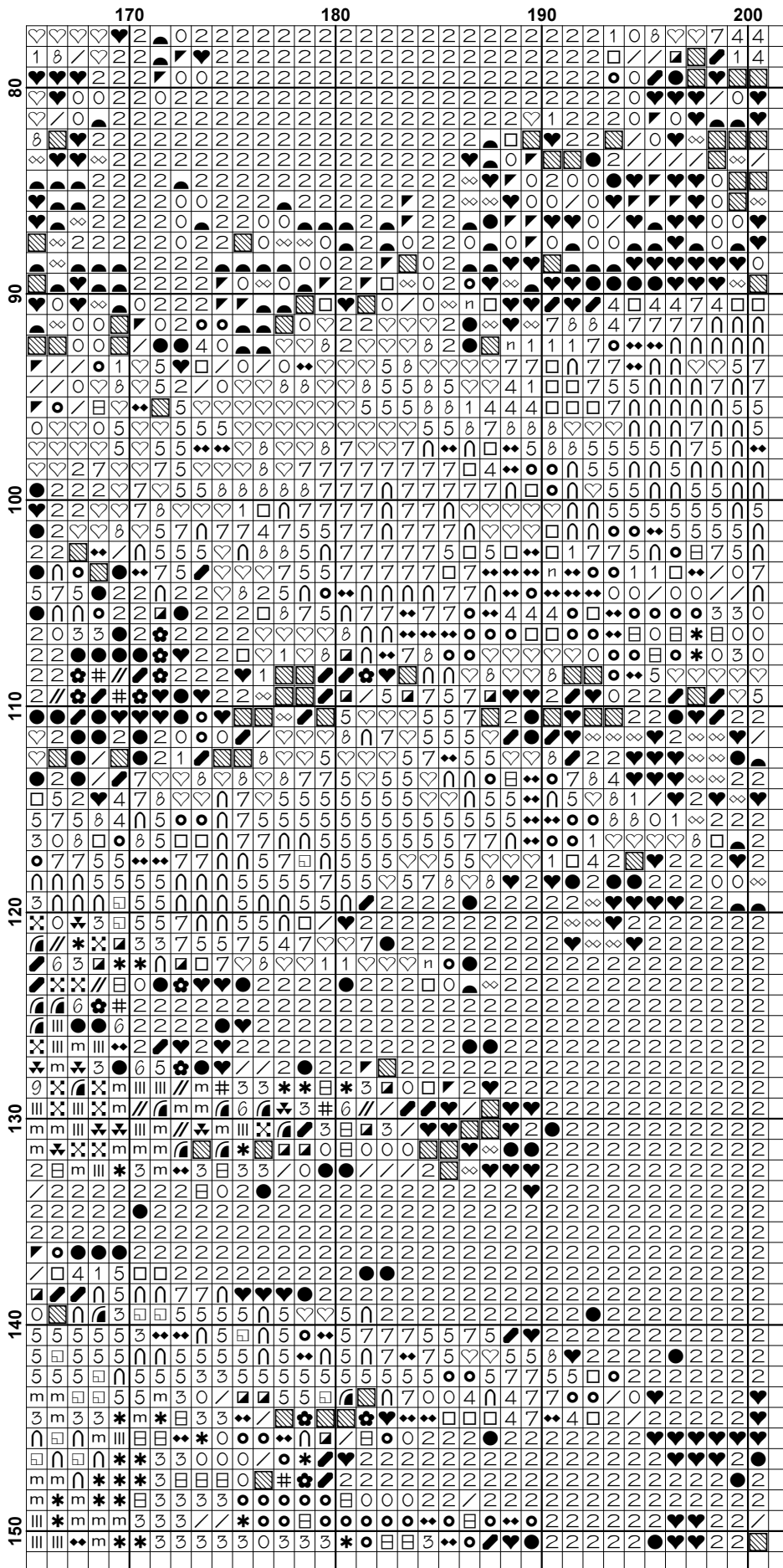












**Pattern Name:** A Farmyard in Winter  
**Designed By:** by John Frederick Herring Jnr  
**Company:** Artecy Cross Stitch  
**Copyright:** Copyright Artecy Cross Stitch. All rights Reserved.  
**Fabric:** Aida 14, White  
 200w X 150h Stitches  
**Size(s):** 14 Count, 14-1/4w X 10-5/8h in  
 16 Count, 12-1/2w X 9-3/8h in  
 18 Count, 11w X 8-1/4h in

**Floss Used for Full Stitches:**

Symbol	Strands	Type	Number	Color
	n	2	DMC 168	Pewter-VY LT
		2	DMC 169	Pewter-LT
	2	2	DMC 310	Black
		2	DMC 317	Pewter Gray
		2	DMC 371	Mustard
	∞	2	DMC 413	Pewter Gray-DK
	●	2	DMC 420	Hazelnut Brown-DK
	*	2	DMC 422	Hazelnut Brown-LT
		2	DMC 535	Ash Gray-VY LT
		2	DMC 610	Drab Brown-DK
	m	2	DMC 612	Drab Brown-LT
	3	2	DMC 640	Beige Gray-VY DK
	*	2	DMC 642	Beige Gray-DK
	∪	2	DMC 644	Beige Gray-MD
	/	2	DMC 645	Beaver Gray-VY DK
	○	2	DMC 646	Beaver Gray-DK
	◦	2	DMC 647	Beaver Gray-MD
	□	2	DMC 648	Beaver Gray-LT
	★	2	DMC 676	Old Gold-LT
	◻	2	DMC 677	Old Gold-VY LT
	8	2	DMC 712	Cream
	9	2	DMC 738	Tan-VY LT
	7	2	DMC 822	Beige Gray-LT
	■	2	DMC 869	Hazelnut Brown-VY DK
	6	2	DMC 898	Coffee Brown-VY DK
	#	2	DMC 938	Coffee Brown-UL DK
		2	DMC 3021	Brown Gray-VY DK
	◻	2	DMC 3022	Brown Gray-MD
	◆	2	DMC 3023	Brown Gray-LT
	4	2	DMC 3024	Brown Gray-VY LT
	☼	2	DMC 3031	Mocha Brown-VY DK
	1	2	DMC 3072	Beaver Gray-VY LT
	●	2	DMC 3371	Black Brown
	5	2	DMC 3770	Tawny-VY LT
	//	2	DMC 3781	Mocha Brown-DK
	◻	2	DMC 3787	Brown Gray-DK
	♥	2	DMC 3799	Pewter Gray-VY DK
	♠	2	DMC 3828	Hazelnut Brown
	✕	2	DMC 3862	Mocha Beige-DK
		2	DMC 3864	Mocha Beige-LT
	♡	2	DMC 3865	Winter White

**Usage Summary**

**Strands Per Skein:** 6  
**Skein Length:** 313.0 in  
 Copyright Artecy Cross Stitch. All rights Reserved.

Type	Number	Full	Half	Quarter	Petite	Back(in)	Str(in)	Spec(in)	French	Bead	Skein	Est.
DMC 168	168	842	0	0	0	0.0	0.0	0.0	0	0	1.000	
DMC 169	169	1873	0	0	0	0.0	0.0	0.0	0	0	1.000	
DMC 310	310	5248	0	0	0	0.0	0.0	0.0	0	0	3.000	
DMC 317	317	485	0	0	0	0.0	0.0	0.0	0	0	1.000	
DMC 371	371	465	0	0	0	0.0	0.0	0.0	0	0	1.000	
DMC 413	413	514	0	0	0	0.0	0.0	0.0	0	0	1.000	
DMC 420	420	96	0	0	0	0.0	0.0	0.0	0	0	1.000	
DMC 422	422	306	0	0	0	0.0	0.0	0.0	0	0	1.000	
DMC 535	535	820	0	0	0	0.0	0.0	0.0	0	0	1.000	
DMC 610	610	207	0	0	0	0.0	0.0	0.0	0	0	1.000	
DMC 612	612	683	0	0	0	0.0	0.0	0.0	0	0	1.000	
DMC 640	640	428	0	0	0	0.0	0.0	0.0	0	0	1.000	
DMC 642	642	178	0	0	0	0.0	0.0	0.0	0	0	1.000	
DMC 644	644	654	0	0	0	0.0	0.0	0.0	0	0	1.000	
DMC 645	645	573	0	0	0	0.0	0.0	0.0	0	0	1.000	
DMC 646	646	1311	0	0	0	0.0	0.0	0.0	0	0	1.000	
DMC 647	647	1635	0	0	0	0.0	0.0	0.0	0	0	1.000	
DMC 648	648	1881	0	0	0	0.0	0.0	0.0	0	0	1.000	
DMC 676	676	154	0	0	0	0.0	0.0	0.0	0	0	1.000	
DMC 677	677	423	0	0	0	0.0	0.0	0.0	0	0	1.000	
DMC 712	712	458	0	0	0	0.0	0.0	0.0	0	0	1.000	
DMC 738	738	249	0	0	0	0.0	0.0	0.0	0	0	1.000	
DMC 822	822	569	0	0	0	0.0	0.0	0.0	0	0	1.000	
DMC 869	869	122	0	0	0	0.0	0.0	0.0	0	0	1.000	
DMC 898	898	165	0	0	0	0.0	0.0	0.0	0	0	1.000	
DMC 938	938	297	0	0	0	0.0	0.0	0.0	0	0	1.000	
DMC 3021	3021	351	0	0	0	0.0	0.0	0.0	0	0	1.000	
DMC 3022	3022	235	0	0	0	0.0	0.0	0.0	0	0	1.000	
DMC 3023	3023	872	0	0	0	0.0	0.0	0.0	0	0	1.000	
DMC 3024	3024	415	0	0	0	0.0	0.0	0.0	0	0	1.000	
DMC 3031	3031	212	0	0	0	0.0	0.0	0.0	0	0	1.000	
DMC 3072	3072	386	0	0	0	0.0	0.0	0.0	0	0	1.000	
DMC 3371	3371	807	0	0	0	0.0	0.0	0.0	0	0	1.000	
DMC 3770	3770	1068	0	0	0	0.0	0.0	0.0	0	0	1.000	
DMC 3781	3781	255	0	0	0	0.0	0.0	0.0	0	0	1.000	
DMC 3787	3787	274	0	0	0	0.0	0.0	0.0	0	0	1.000	
DMC 3799	3799	1716	0	0	0	0.0	0.0	0.0	0	0	1.000	
DMC 3828	3828	194	0	0	0	0.0	0.0	0.0	0	0	1.000	
DMC 3862	3862	383	0	0	0	0.0	0.0	0.0	0	0	1.000	
DMC 3864	3864	324	0	0	0	0.0	0.0	0.0	0	0	1.000	
DMC 3865	3865	1872	0	0	0	0.0	0.0	0.0	0	0	1.000	